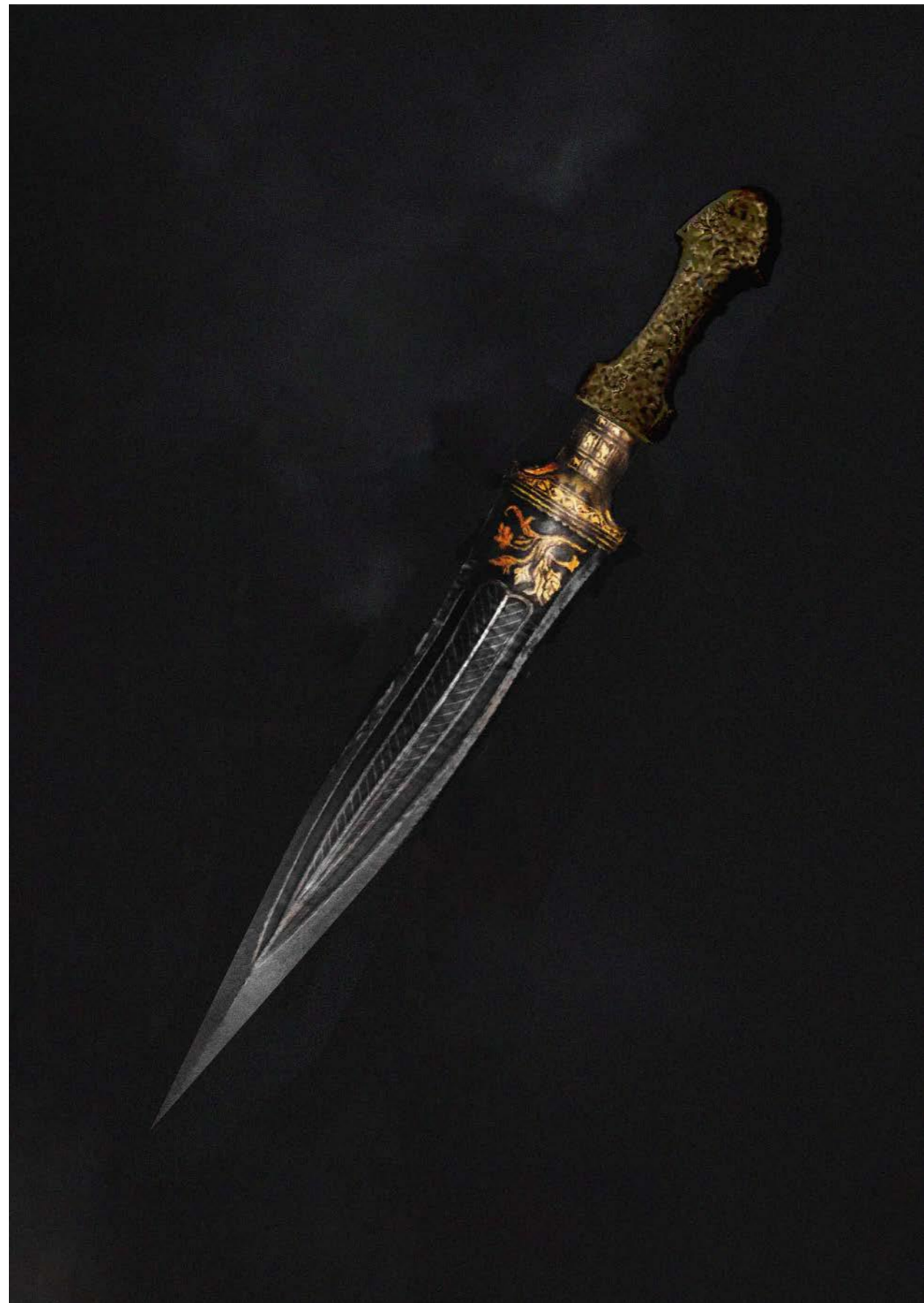


DIARMUID WOLFE PORTFOLIO

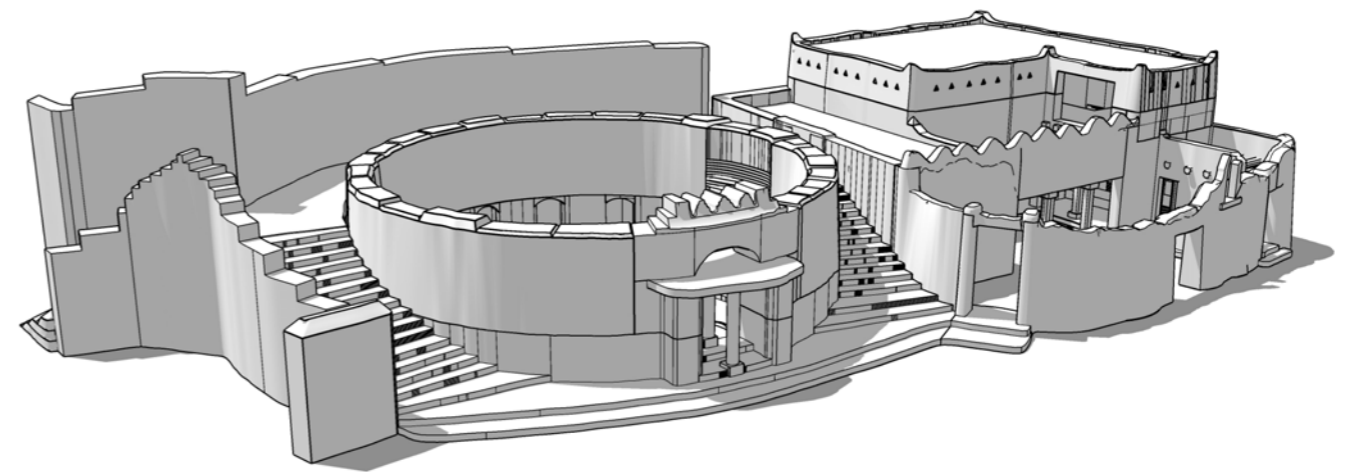
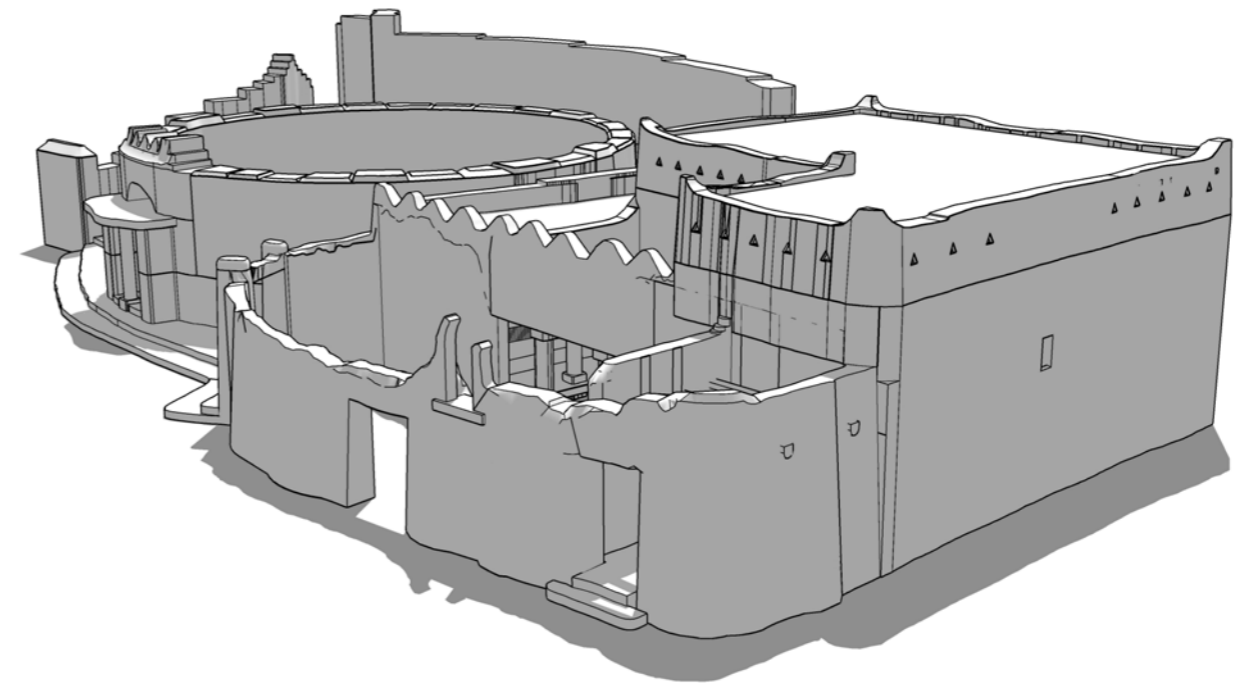




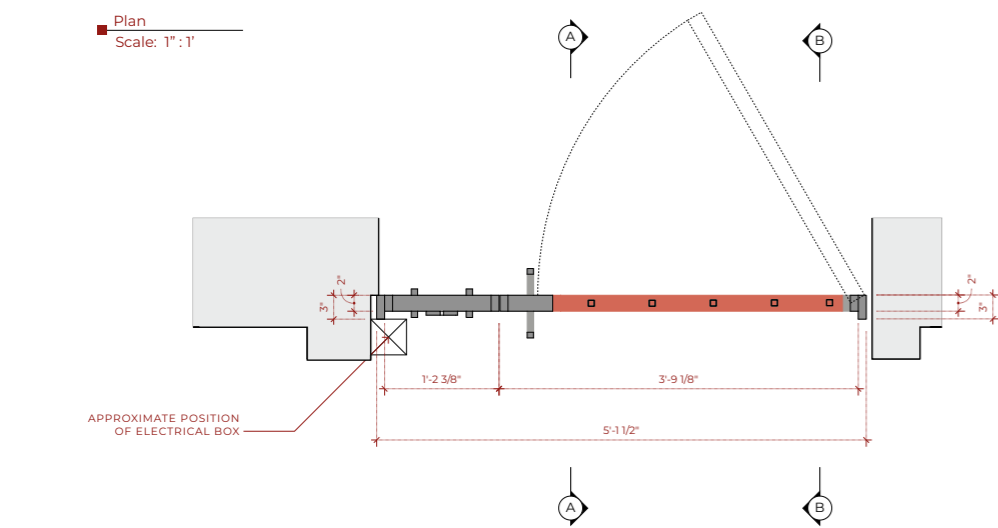
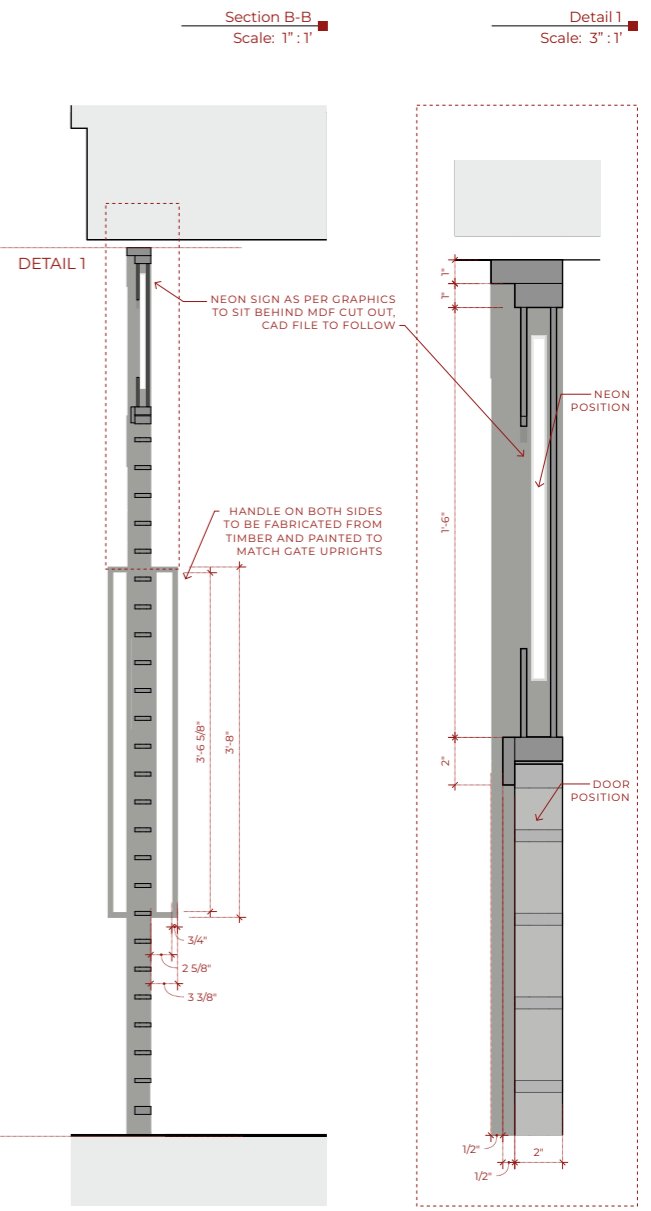
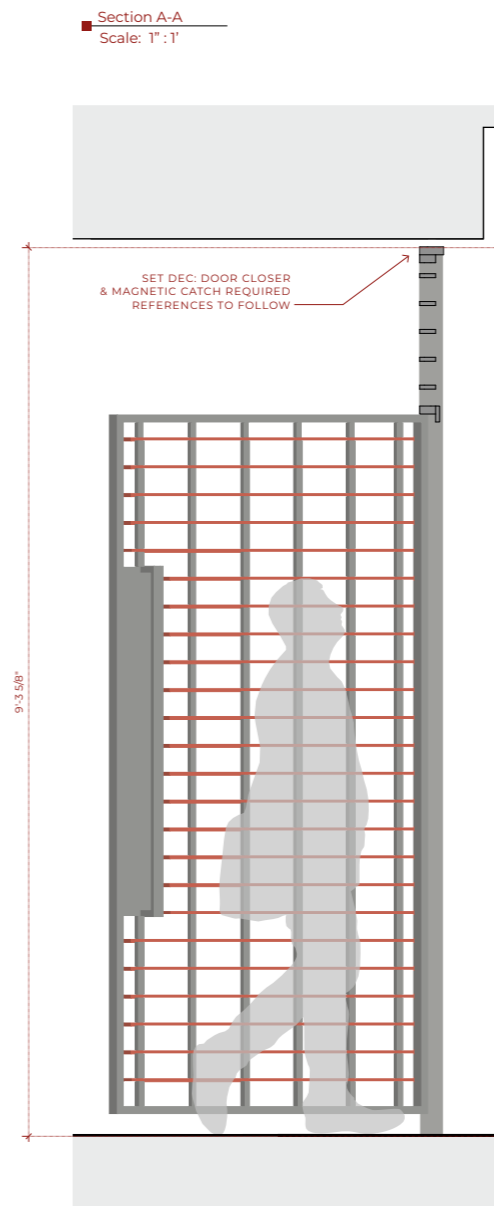
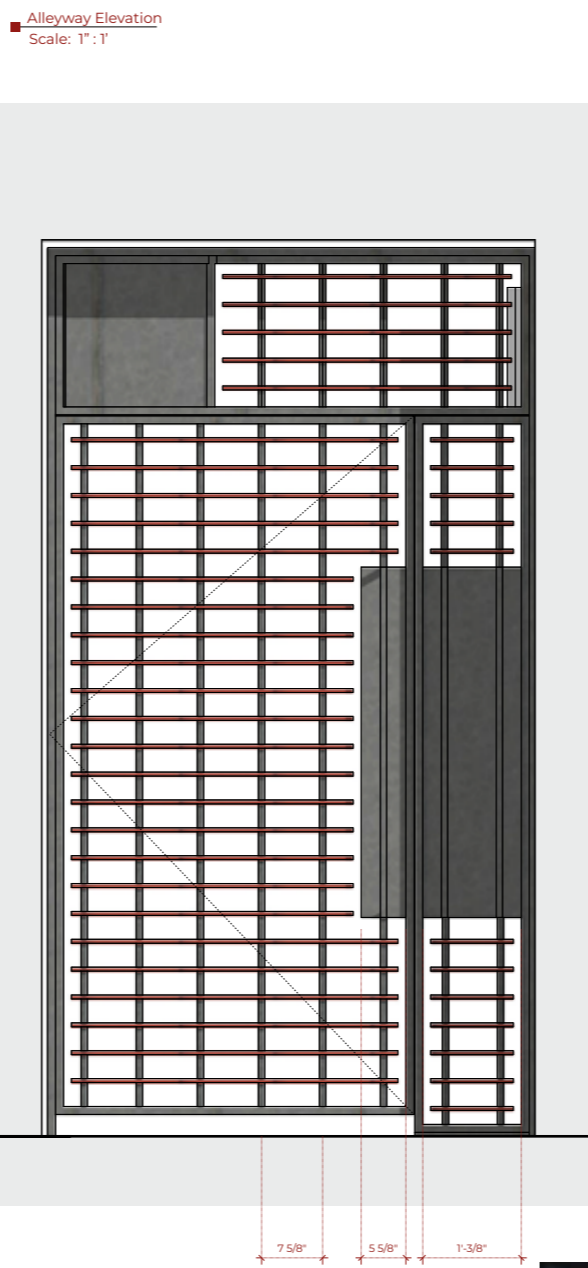
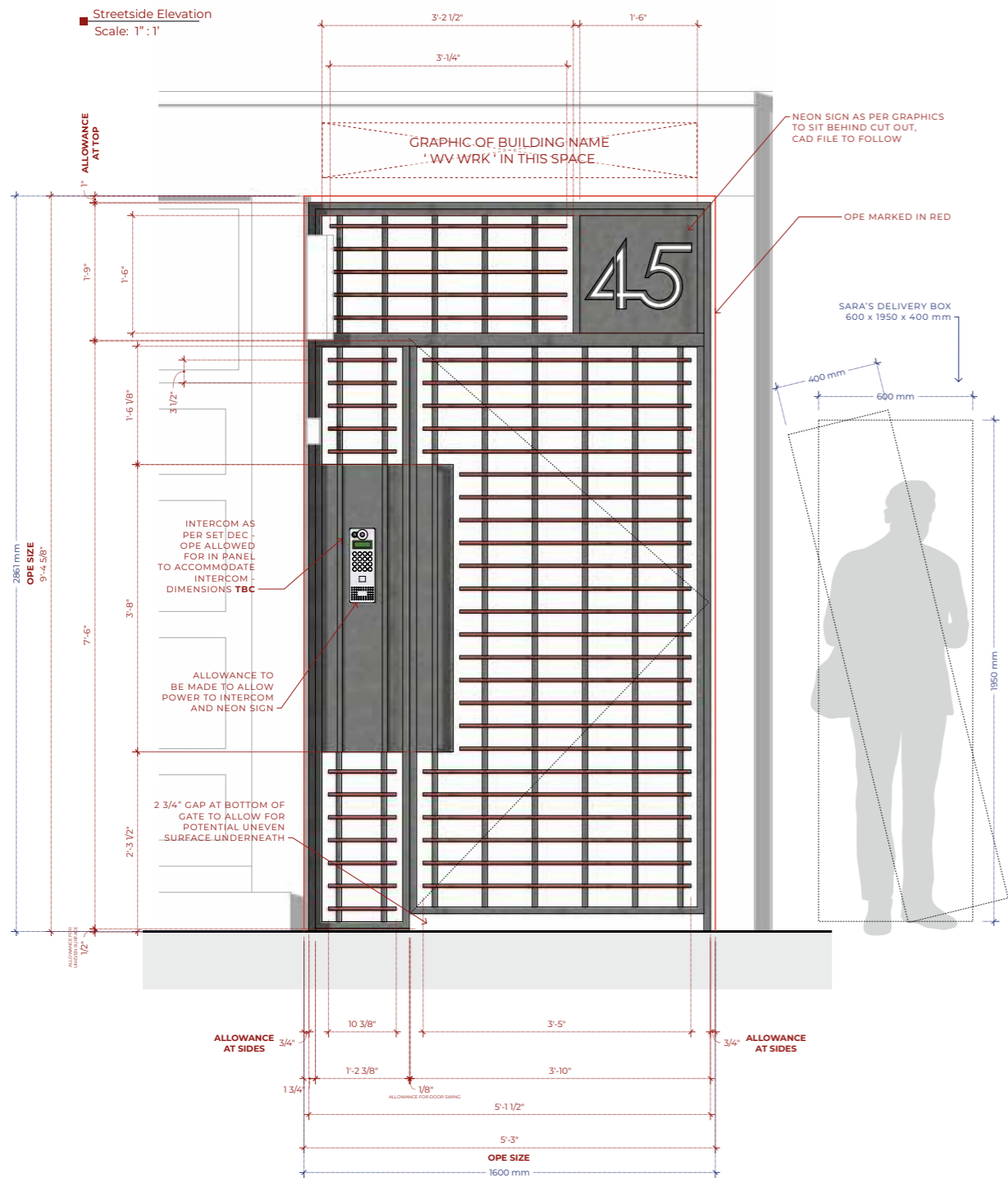
Hand drawings depicting tone and spatiality



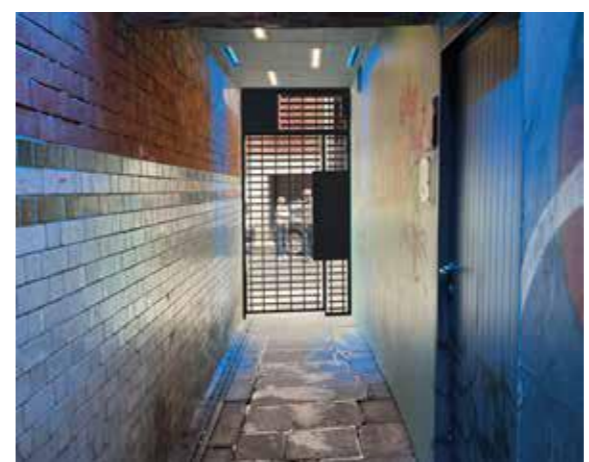
Test renders for hero weapon, to be heated over flame and used as brand



Left; Photographic collage, and Right subsequent 3d model built from Art Director's drawings. Model then converted and used by CNC machine to fabricate set



**Renders**  
Scale: NTS



**NB GENERAL:** METALWORKERS TO PROVIDE STEEL FRAME, HORIZONTAL ELEMENTS, PANEL FOR INTERCOM AND PANEL FOR NEON TO BE CONSTRUCTED FROM MDF / APPROPRIATE TIMBER AND PAINTED AS PER PRODUCTION DESIGNER.

**NB CONSTRUCTION:** METAL FINISHES AS PER PRODUCTION DESIGNER. PANELS TO BE MADE FOR INTERCOM & NEON SIGN. ALLOWANCE TO BE MADE TO ACCOMMODATE INTERCOM AND NEON SIGN EXACT SPECIFICATION AND DIMENSIONS TO FOLLOW.

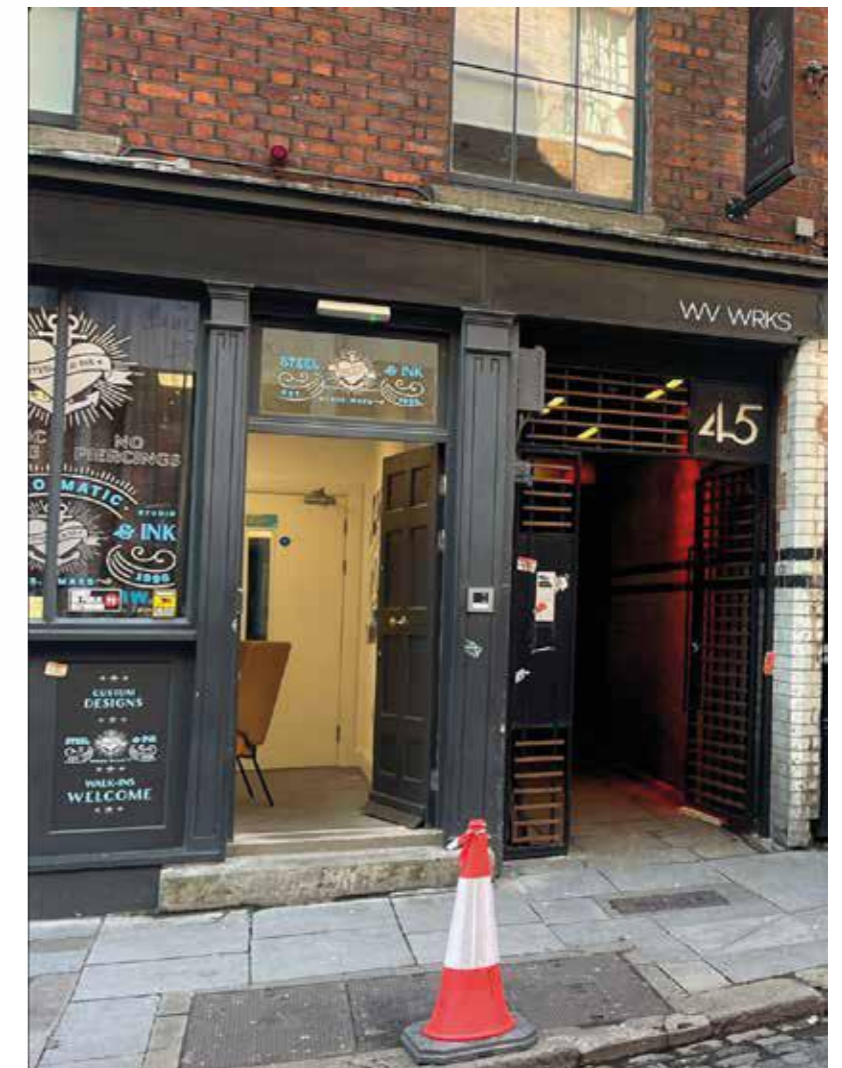
**NB SET DEC:** INTERCOM AS PER REFERENCE. DOOR CLOSER REQUIRED AS PER REFERENCE TO FOLLOW. MAGNETIC DOOR CATCH REQUIRED REFERENCE TO FOLLOW.

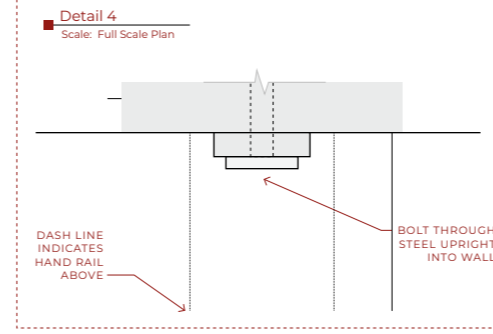
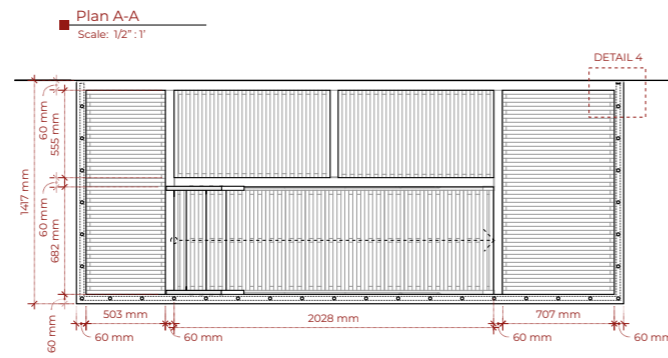
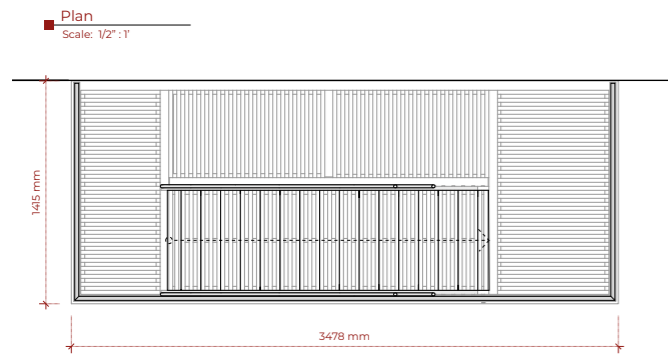
**NB GRAPHICS:** NEON SIGN 'No. 45'. GRAPHIC OF BUILDING NAME 'VV WRK' APPLIED ABOVE GATE.

**NB PRAC SPARK:** ALLOWANCE TO BE MADE TO PROVIDE POWER TO INTERCOM & NEON SIGN - PREFERENCE DARK CABLE ON ALLEYWAY SIDE.

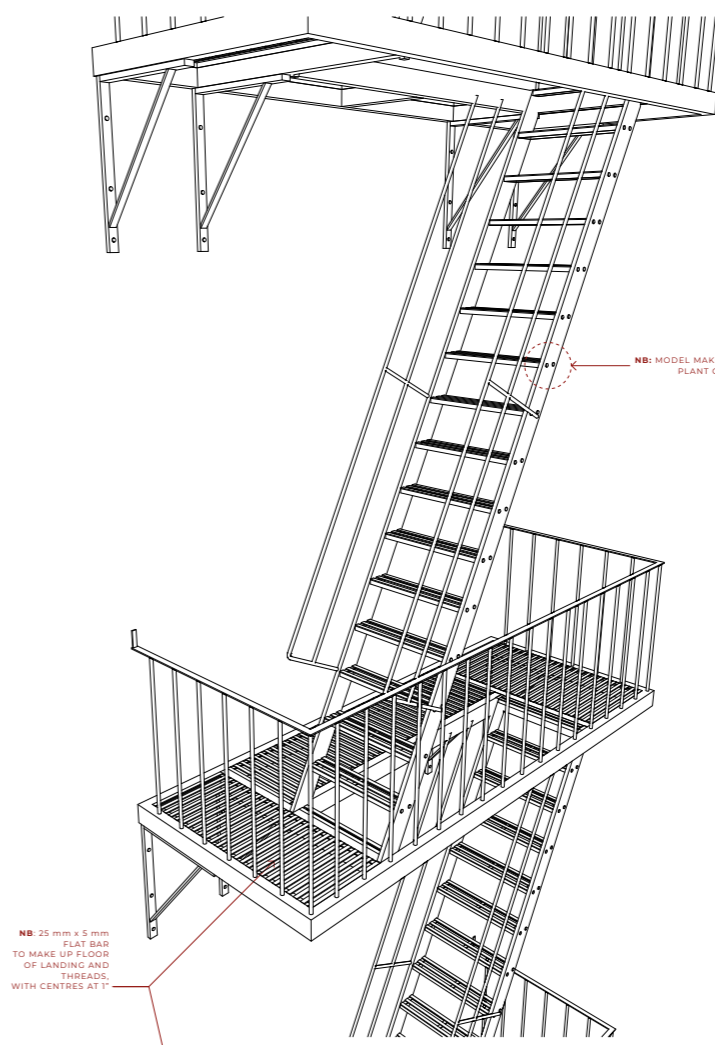
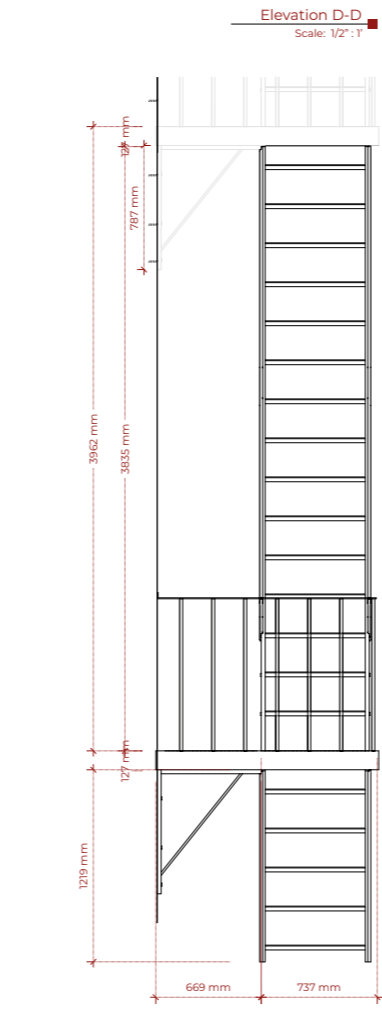
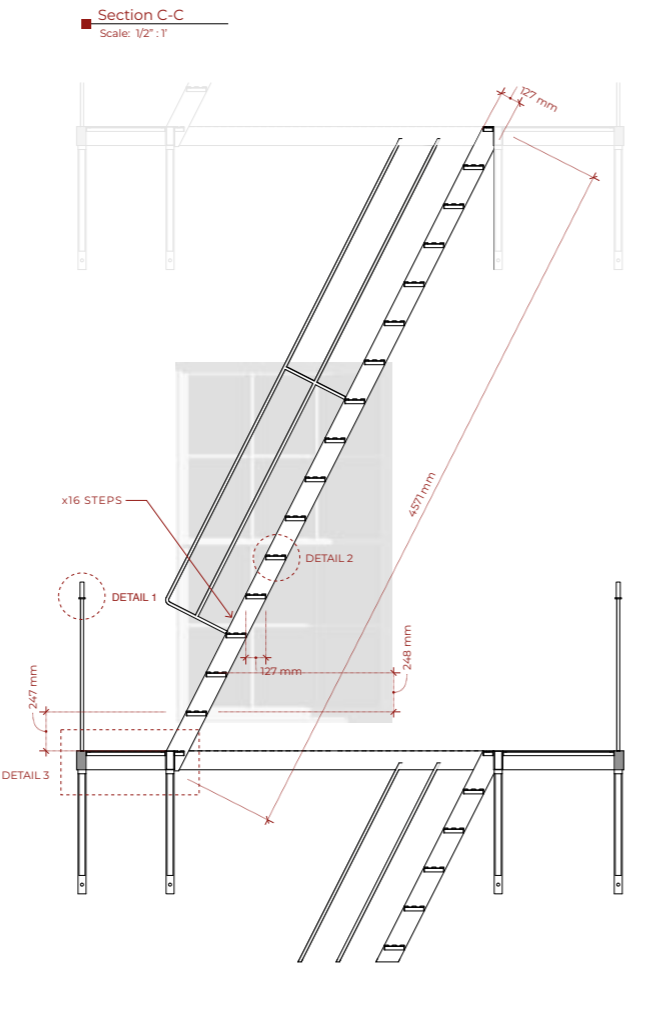
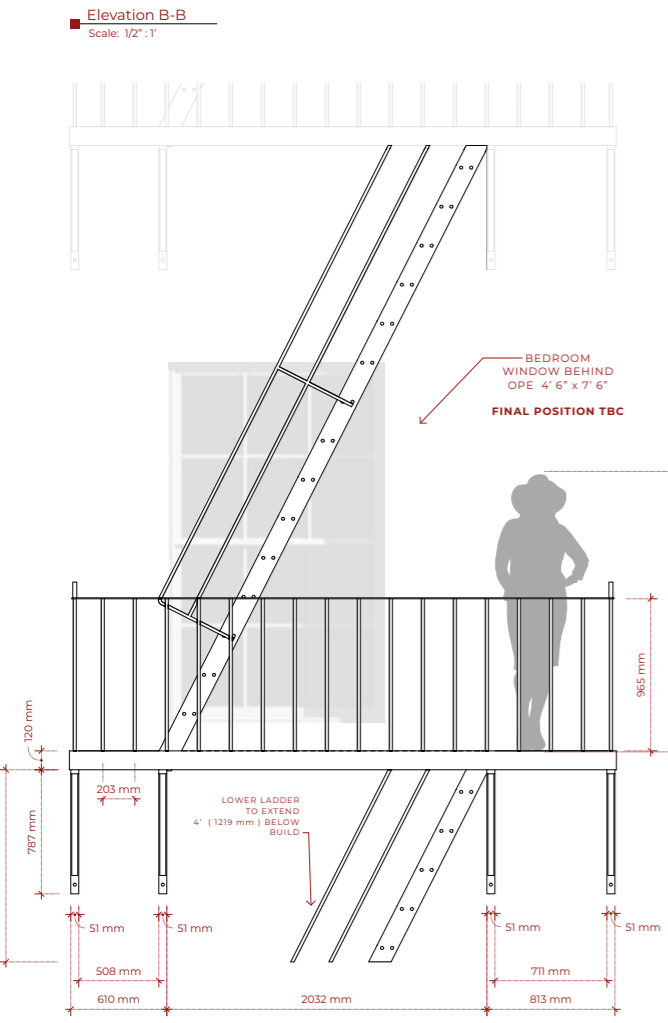
ISSUED 27.09.2024

<b>SOULMØTE</b>						<b>DESIGNER</b>	
						SUSIE CULLEN	
EXT DAVID'S APARTMENT						DWG No.	047
APT. GATE - ESSEX STREET						SET No.	107
SCALE						1" : 1', FS	
<b>DRAWN BY</b>	DW	<b>PRODUCER</b>	DECORATOR	CON. MNGR	CAMERA	VFX	
<b>APPROVED</b>	BT	<b>DIRECTOR</b>	BUYER	CARPENTERS	GAFFER	SFX	
<b>DATE DRAWN</b>	11.09.2024	<b>PRODUCTION</b>	PROPS	PLASTERERS	METAL	ART	
<b>DATE ISSUED</b>	27.09.2024	<b>LOCATIONS</b>	DRAPES	PAINTERS	RIGGERS	GFX	
<b>LOCATION</b>	ESSEX ST., DUBLIN	<b>MODELMAKERS</b>	CONSTRUCTION MODELMAKER	STUNTS	GREENS		

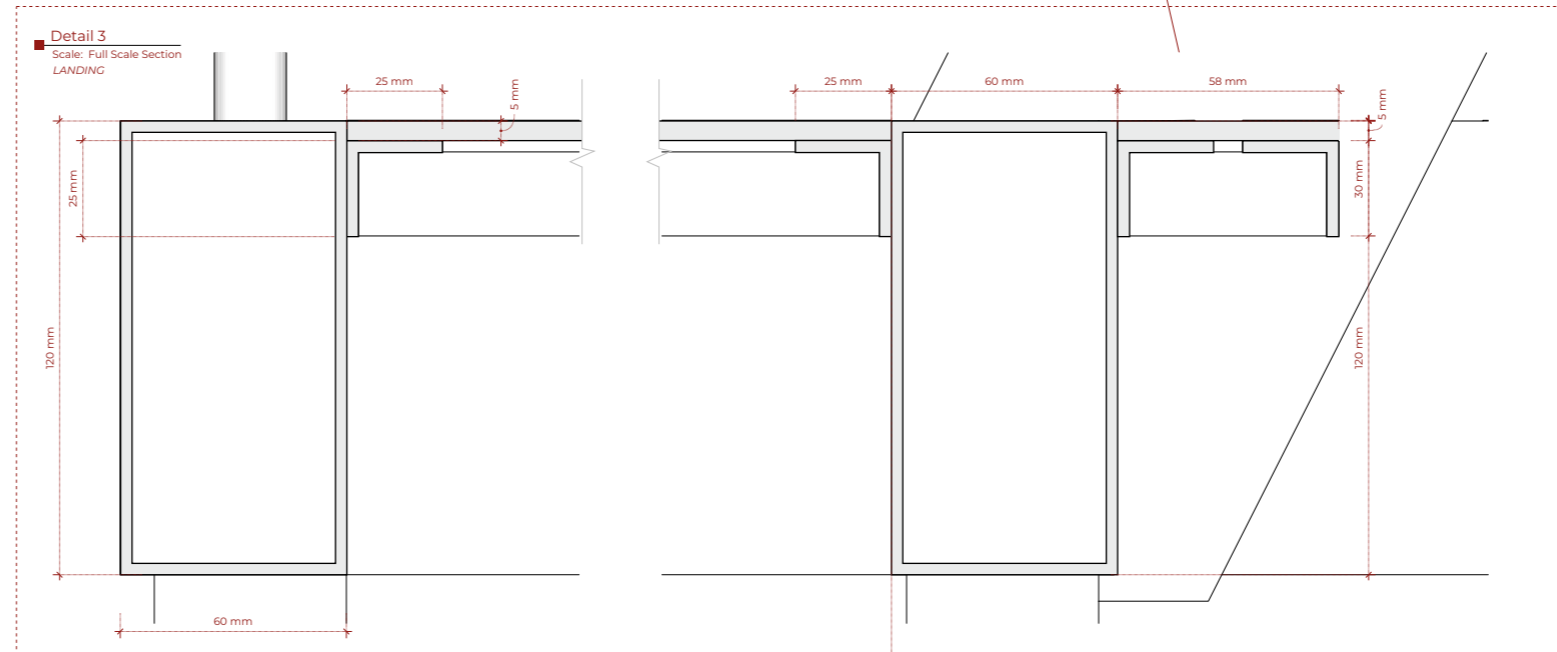
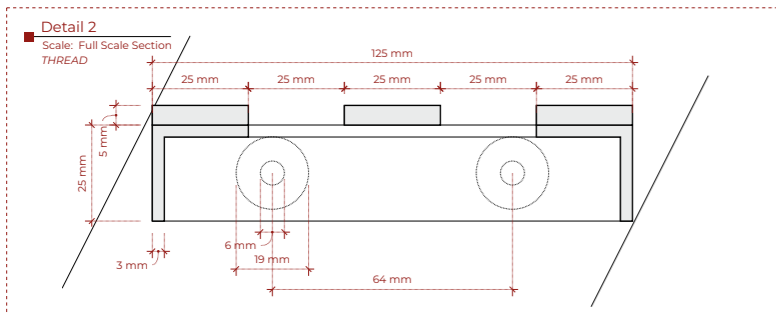
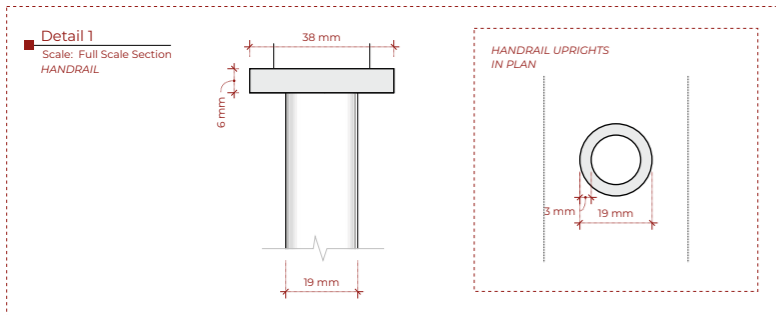
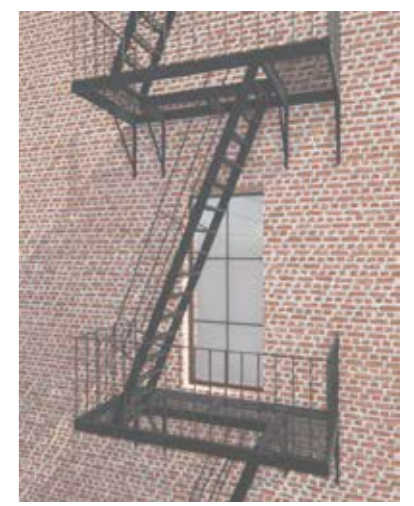




Reference  
Scale: NTS



Reference  
Scale: NTS



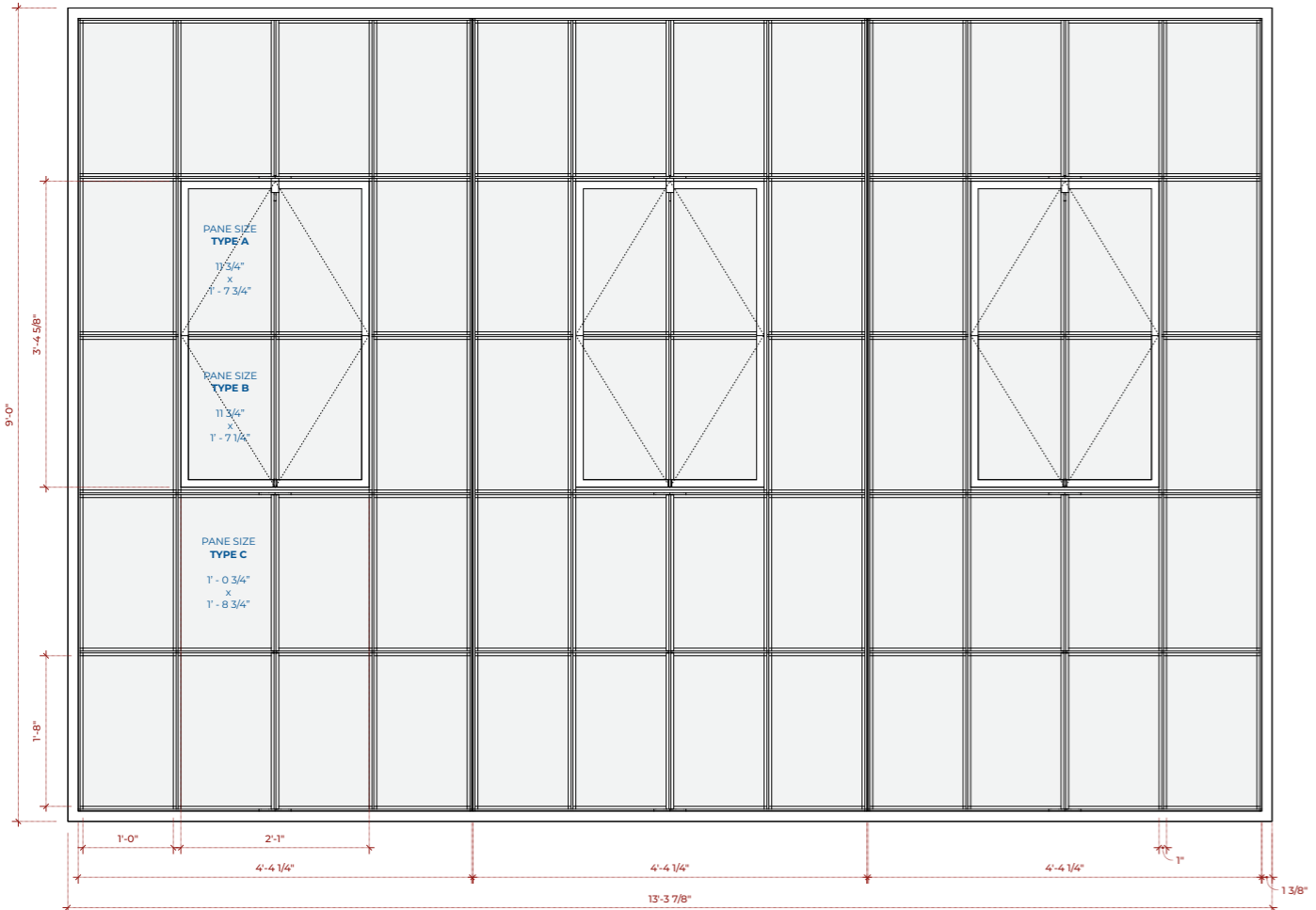
NB: MODEL MAKERS TO MAKE PLANT ON BOLTS TBC

METRIC DIMENSIONS  
ISSUED 22.08.2024

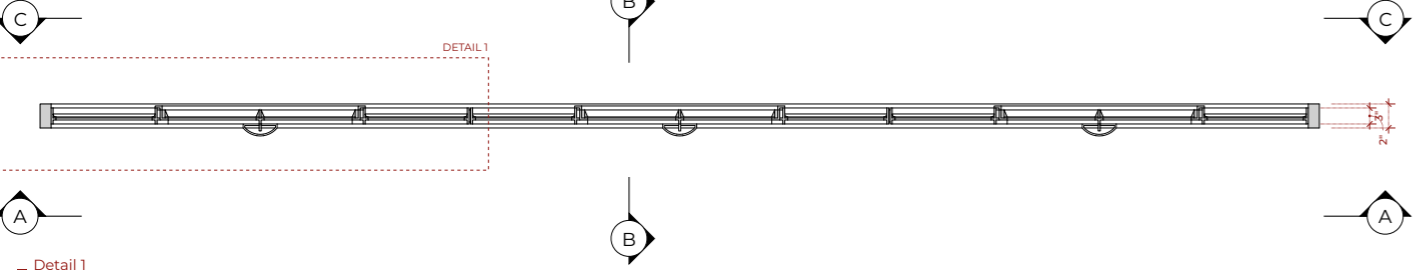
<b>SOULMØTE</b>		<b>DESIGNER</b> SUSIE CULLEN									
		DWG No.	006								
SET	DAVID'S APT.										
DETAILS	FIRE ESCAPE DETAIL										
SCALE	1/2":1', FS										
DRAWN BY	DW	PRODUCER	X	DECORATOR	X	CON. MNGR	X	CAMERA	X	VFX	X
APPROVED		DIRECTOR	X	BUYER	X	CAARPENTER	X	GAFFER	X	SFX	X
DATE DRAWN	06.08.2024	PRODUCTION	X	PROPS	X	PLASTERERS	X	METAL	X	ART	X
DATE ISSUED	22.08.2024	LOCATIONS	X	DRAPES	X	PAINTERS	X	RIGGERS	X	GFX	X
LOCATION	A STAGE		MODELMAKERS	CONSTRUCTION	MOULDMARK	STUNTS	GREENS				

Elevation A-A  
Scale: 1":1'

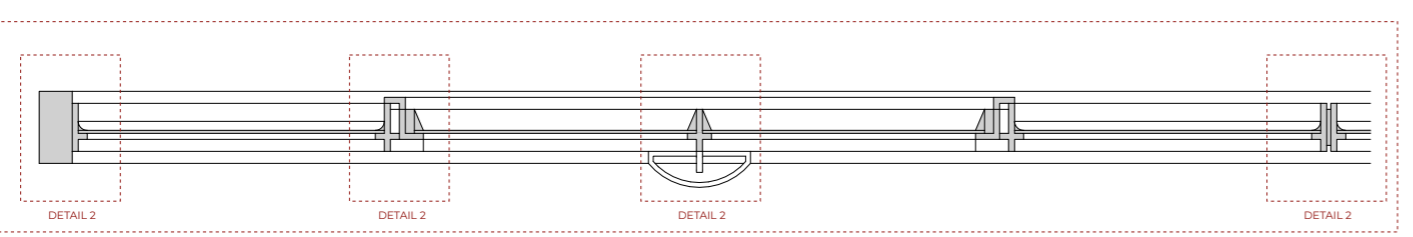
INSIDE



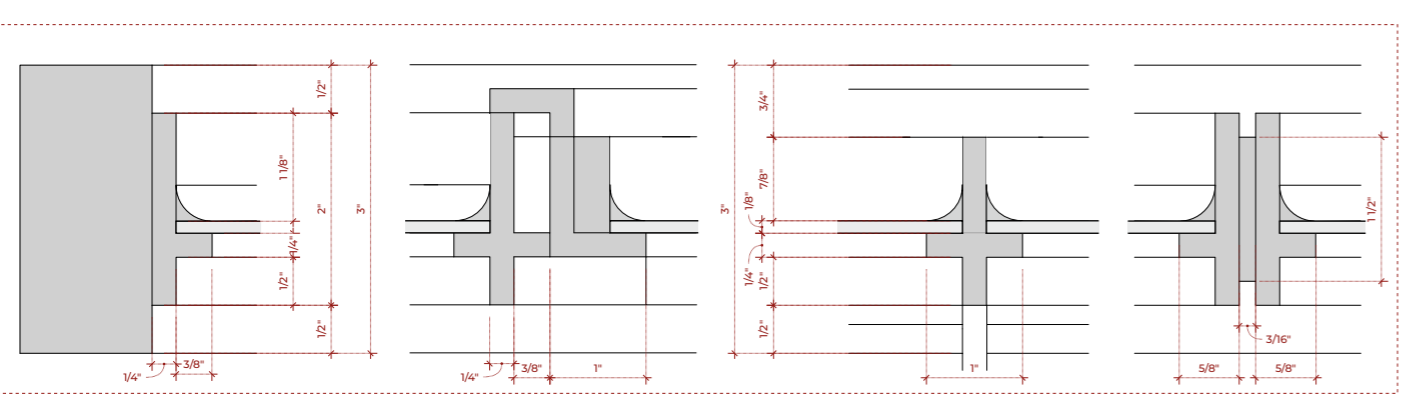
Plan  
Scale: 1":1'



Detail 1  
Scale: 3":1'



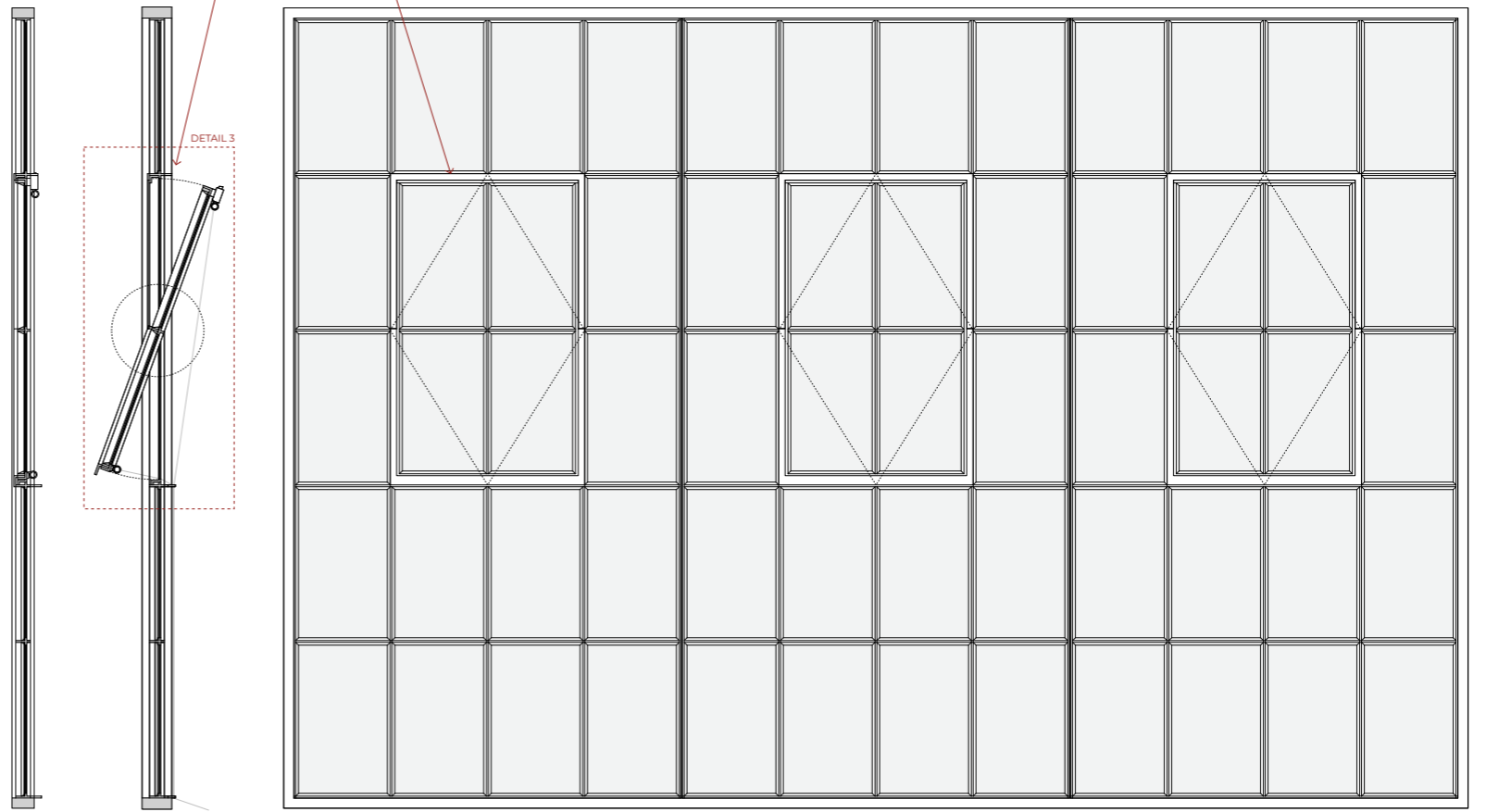
Detail 2  
Scale: Full Scale



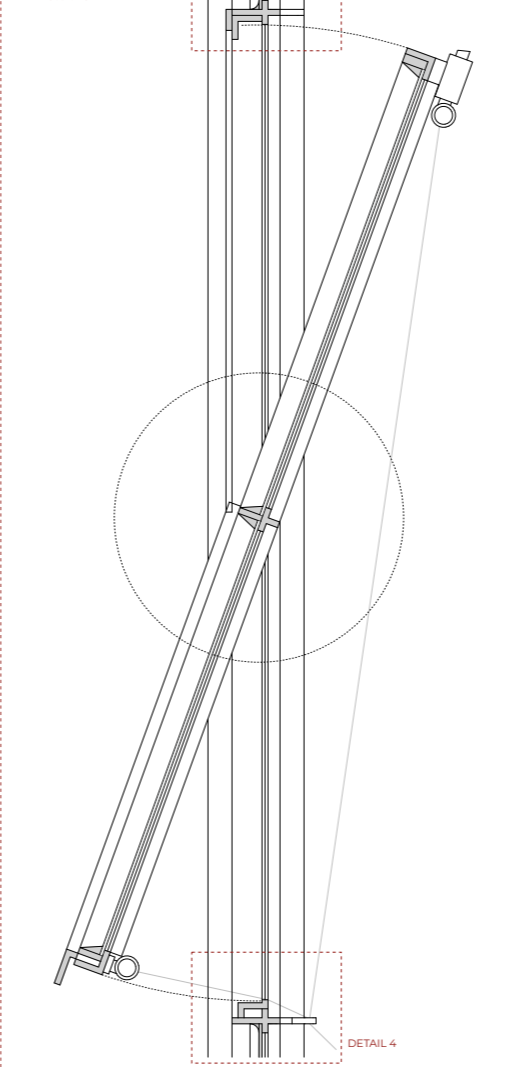
Section B-B  
Scale: 1":1'

OUTSIDE

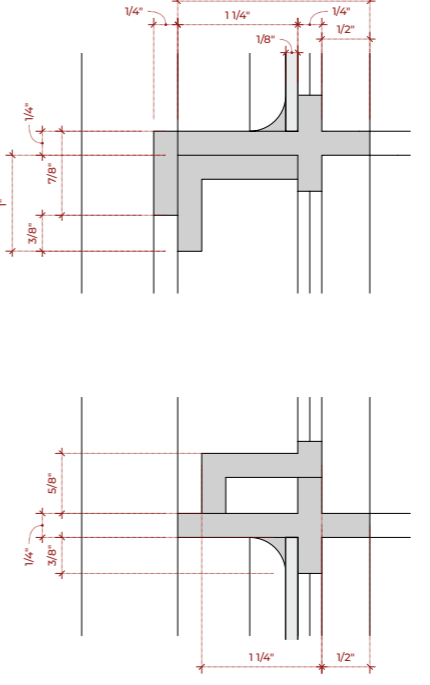
Elevation C-C  
Scale: 1":1'



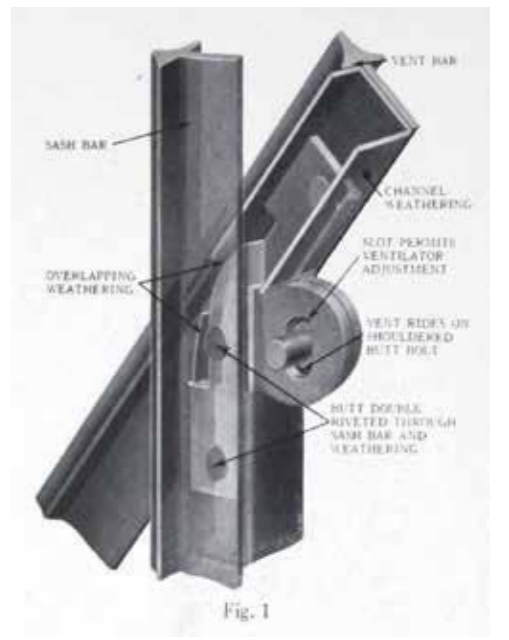
Detail 3  
Scale: 3":1'



Detail 4  
Scale: Full Scale



REFERENCE FOR PIVOT DETAIL



**GLASS PANE SCHEDULE**

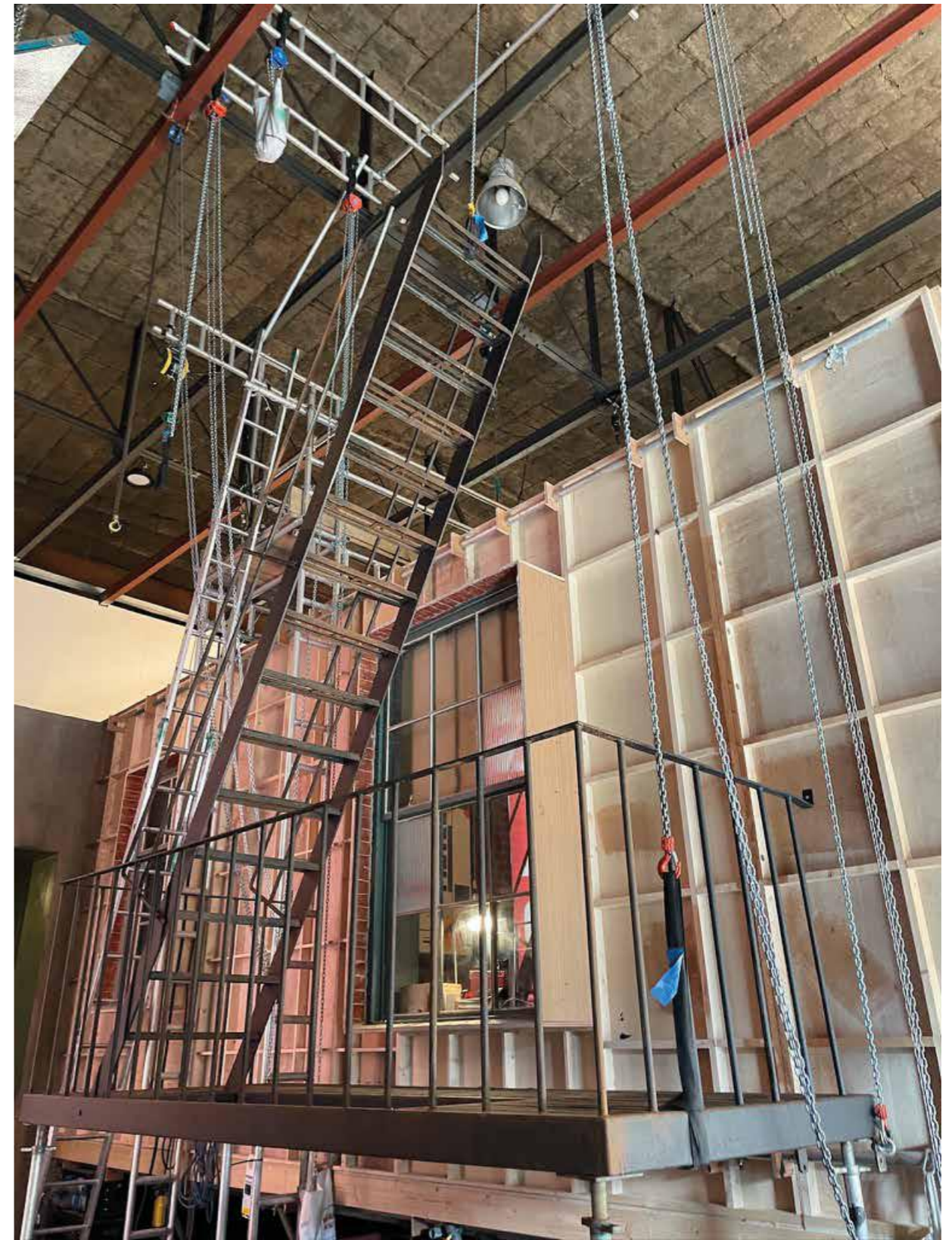
TYPE	DIMS (W x H)	QUANTITY
A	11 3/4" x 7 3/4"	x 12
B	11 3/4" x 7 1/4"	x 12
C	1'-0 3/4" x 1'-8 3/4"	x 96

**SOULMØTE**

DAVID'S APT.						
SET	WINDOW DETAIL					
DRAWN BY	DW	PRODUCER	DECORATOR	CON. MNGR.	CAMERA	VFX
APPROVED	SC	DIRECTOR	BUYER	CAARPENTERS	GAFFER	SFX
DATE DRAWN	12.08.2024	PRODUCTION	PROPS	PLASTERERS	METAL	ART
DATE ISSUED	04.09.2024	LOCATIONS	DRAPES	PAINTERS	RIGGERS	GFX
LOCATION	A STAGE	MODELMAKERS	CONSTRUCTION	MOULMØTE	STUNTS	GREENS

DESIGNER: SUSIE CULLEN  
DWG No.: 023  
SET No.: 111  
SCALE: 1"=1', 3/4"=1', FS

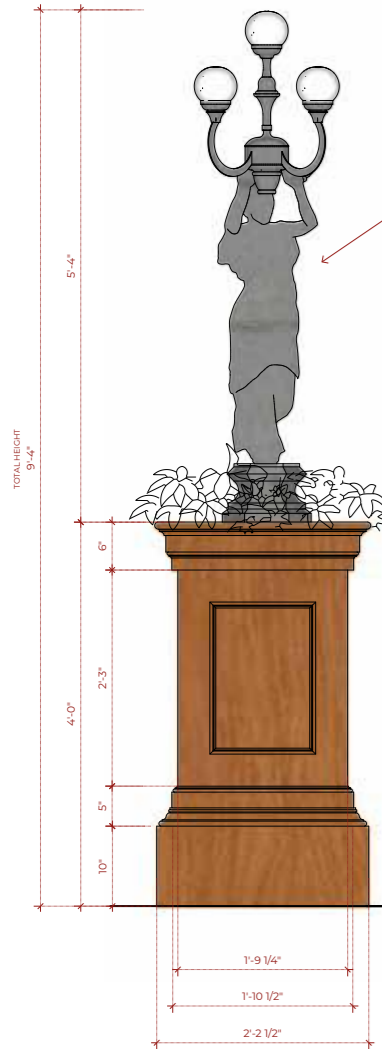
ISSUED 04.09.2024



**STAND TYPE 'A'**  
NARROWER BASE, NO PLINTH

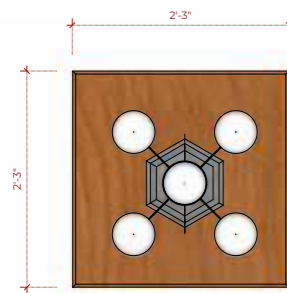
x6

Front Elevation - Type A  
Scale: 1":1'



NB WEIGHT OF THIS STATUE IS 40kg

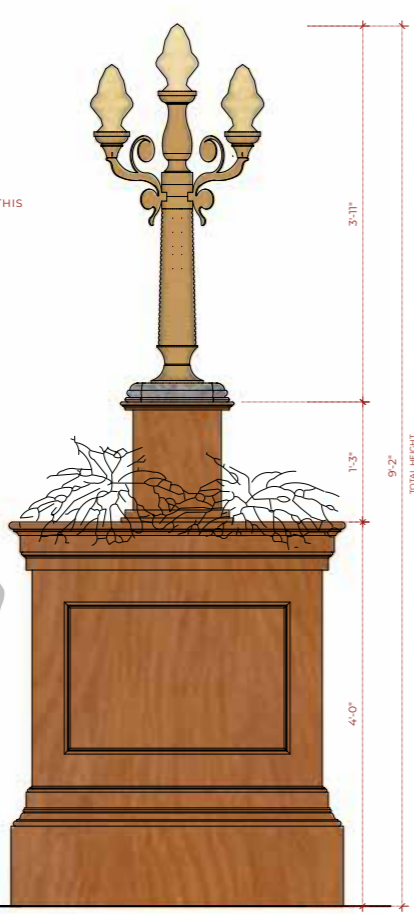
Plan - Type A  
Scale: 1":1'



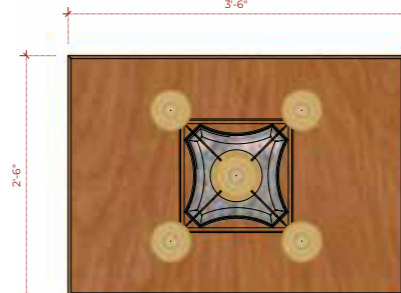
**STAND TYPE 'B'**  
CENTRAL PLINTH 1' 3" IN HEIGHT

x6

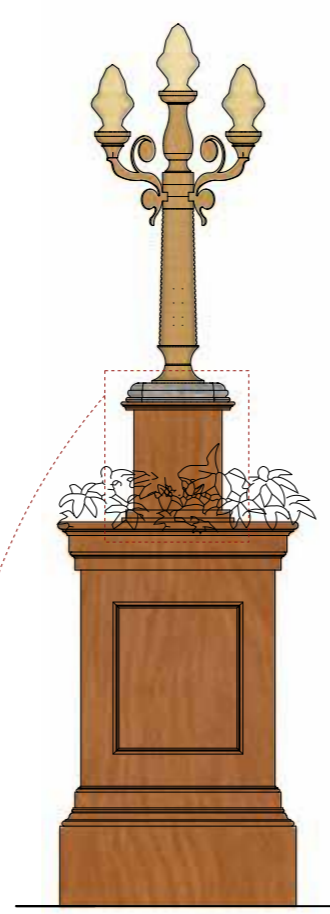
Front Elevation - Type B  
Scale: 1":1'



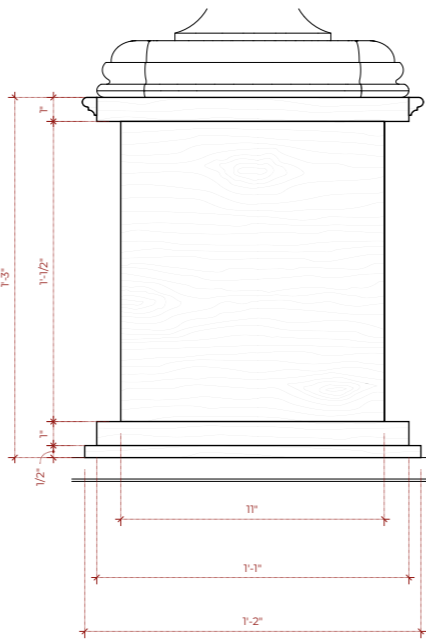
Plan - Type B  
Scale: 1":1'



Typical Side Elevation For Type B & Type C  
Scale: 1":1'



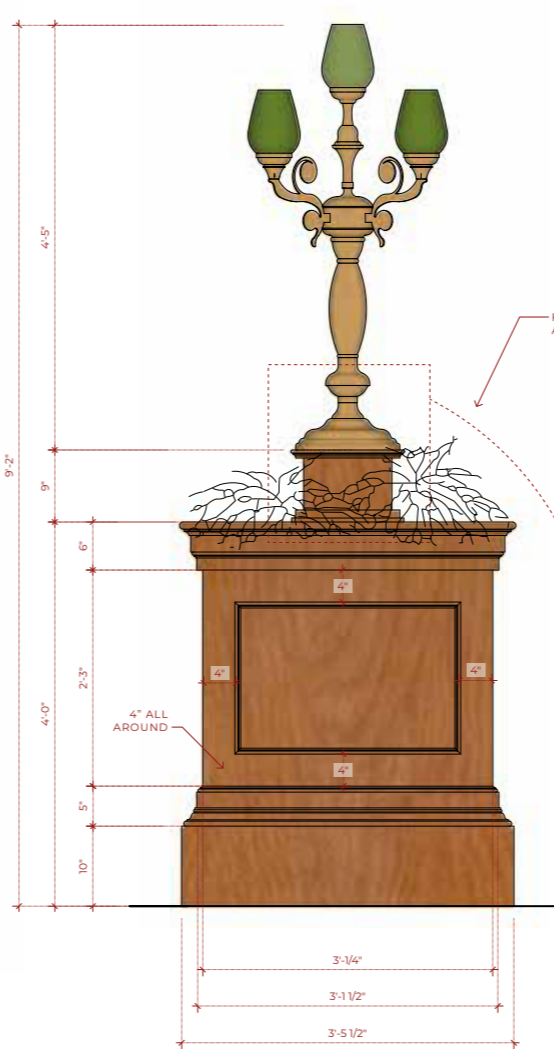
Plinth Detail - Type B  
Scale: 3":1'



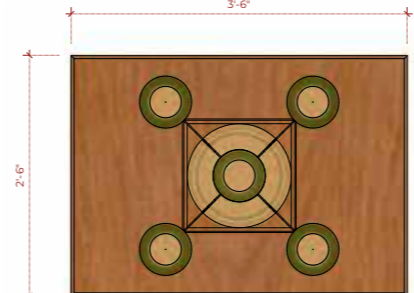
**STAND TYPE 'C'**  
CENTRAL PLINTH 9" IN HEIGHT

x4

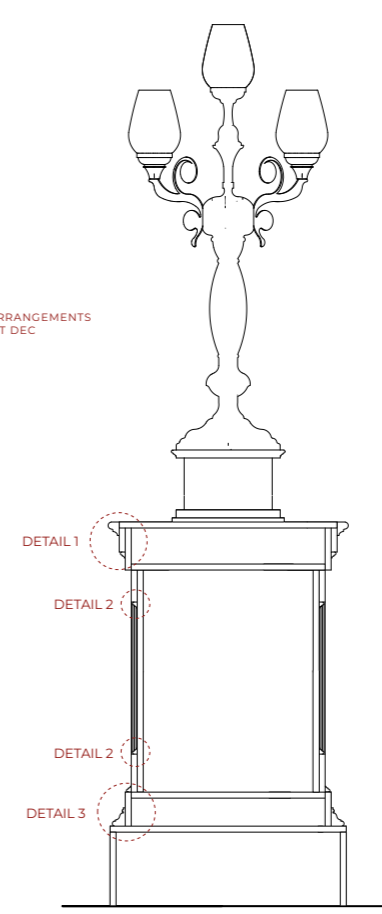
Front Elevation - Type C  
Scale: 1":1'



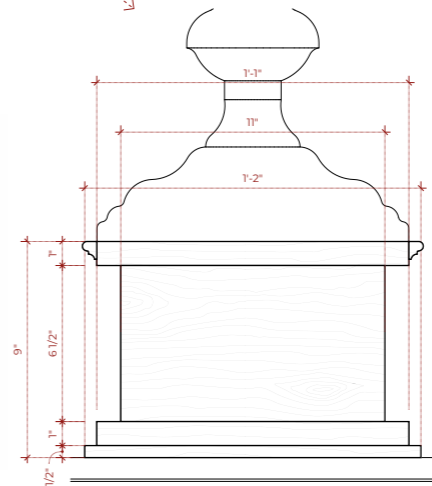
Plan - Type C  
Scale: 1":1'



Typical Section For Type B & Type C  
Scale: 1":1'



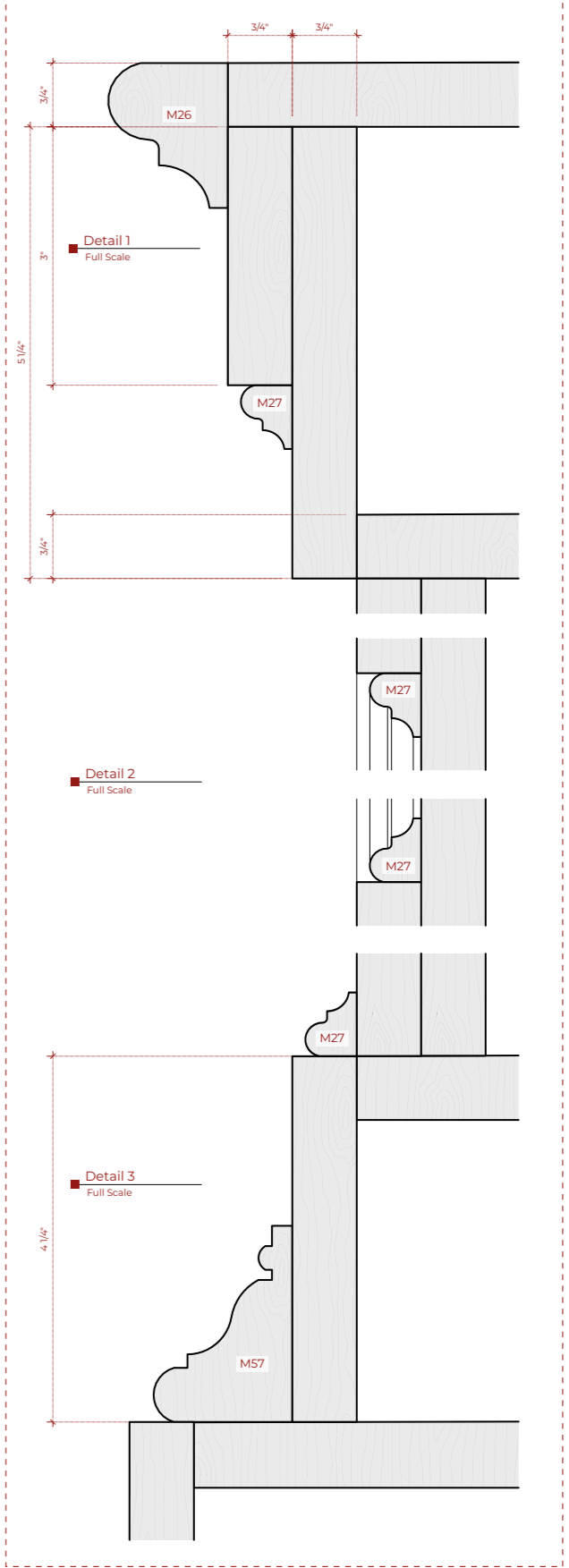
Plinth Detail - Type C  
Scale: 3":1'



**NB CONSTRUCTION:**  
QTY x16 UNITS IN TOTAL  
TO BE CONSTRUCTED FROM PLYWOOD  
CORNERS MITRED TO CONCEAL PLY EDGE  
MOULDINGS TO BE USED AS SHOWN OR NEAREST AVAILABLE

**NB PAINTERS:**  
MAHOGANY FINISH

**NB SET DEC**  
TO PROVIDE DECORATIVE LIGHTS AS PER PROVIDED REFERENCE  
TO PROVIDE FLORAL ARRANGEMENTS AS INDICATED



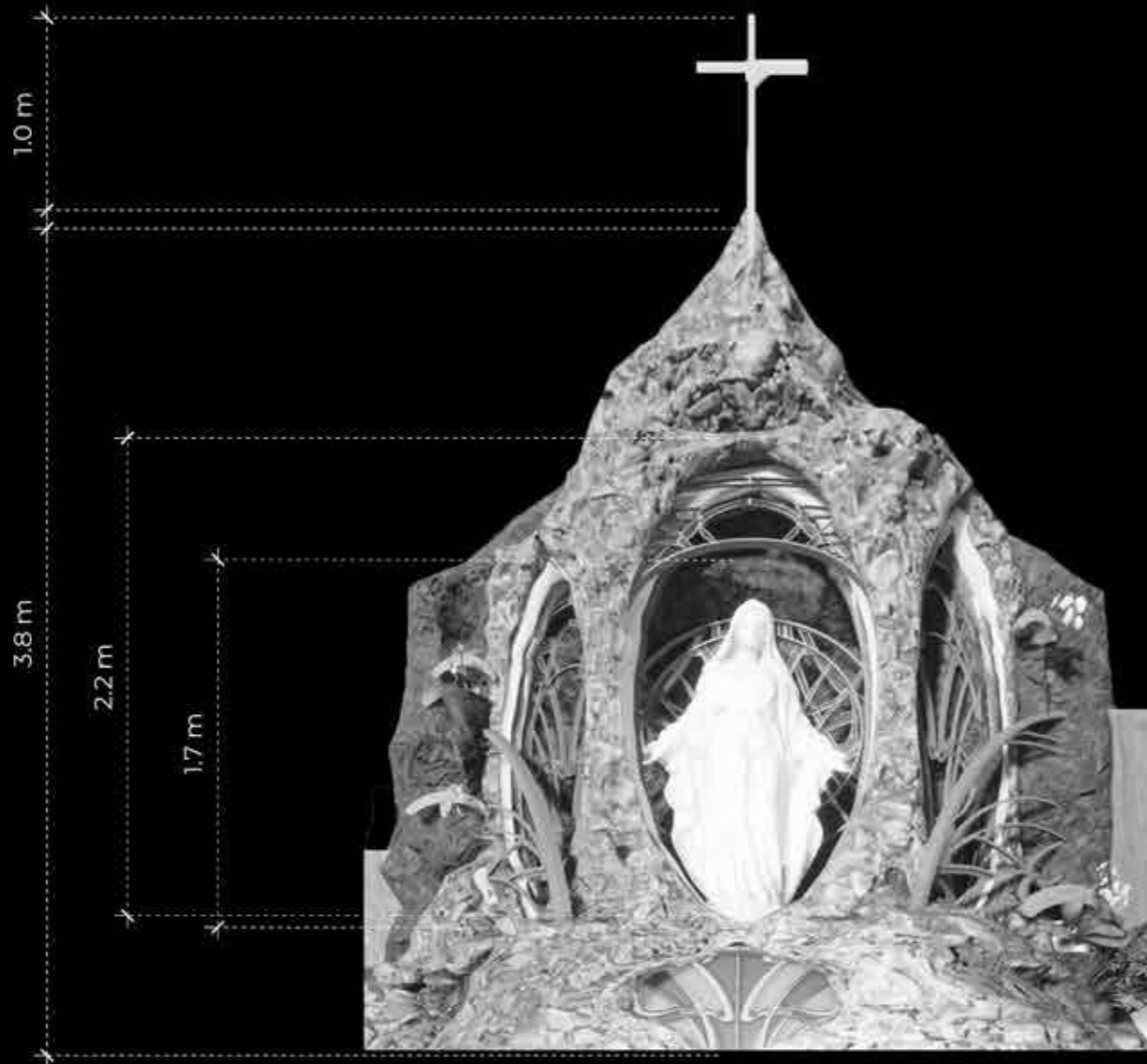
ISSUED 07-10-24

<b>SOULMØTE</b>							<b>DESIGNER</b> SUSIE CULLEN		
							DWG No.	055	
							SET No.	136	
							SCALE	1":1', 3":1', FS	
<b>SET</b>	HISTORIC BUILDING								
<b>DETAILS</b>	DECORATIVE STANDS								
<b>DRAWN BY</b>	DW	<b>PRODUCER</b>	<b>DECORATOR</b>	<b>CON. MNGR</b>	<b>CAMERA</b>	<b>VFX</b>			
<b>APPROVED</b>	SC	<b>DIRECTOR</b>	<b>BUYER</b>	<b>CARPENTERS</b>	<b>GAFFER</b>	<b>SFX</b>			
<b>DATE DRAWN</b>	02.10.2024	<b>PRODUCTION</b>	<b>PROPS</b>	<b>PLASTERERS</b>	<b>METAL</b>	<b>ART</b>			
<b>DATE ISSUED</b>	07.10.2024	<b>LOCATIONS</b>	<b>DRAPES</b>	<b>PAINTERS</b>	<b>RIGGERS</b>	<b>GFX</b>			
<b>LOCATION</b>	CITY HALL, DUBLIN	<b>MODELMAKERS</b>	<b>CONSTRUCTION</b>	<b>MOULMAKERS</b>	<b>STUNTS</b>	<b>GREENS</b>			



Front Elevation

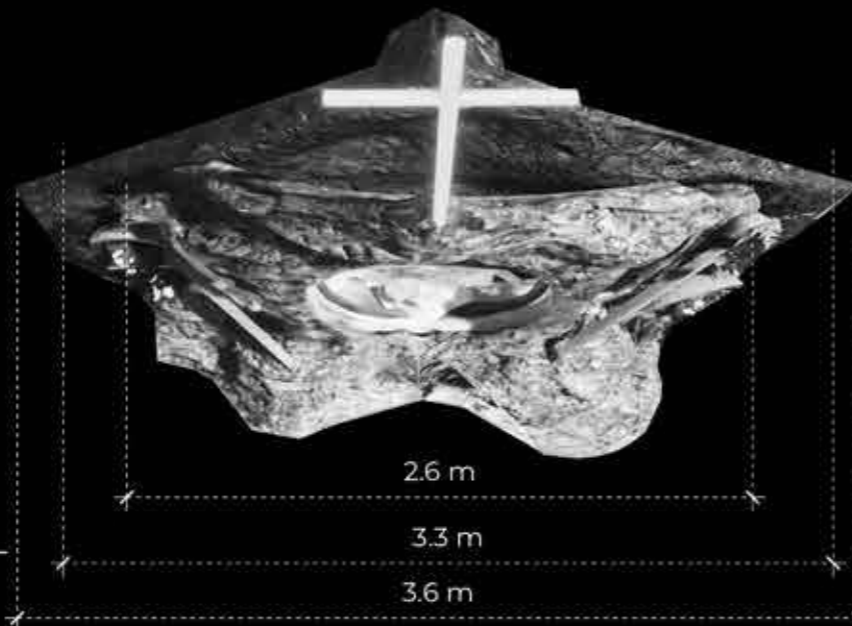
A 002 scale: 1:32



Section

scale: 1:32

B 002



Plan

C 002 scale: 1:24

**NOTE: WORK IN PROGRESS, NOT FOR CONSTRUCTION**

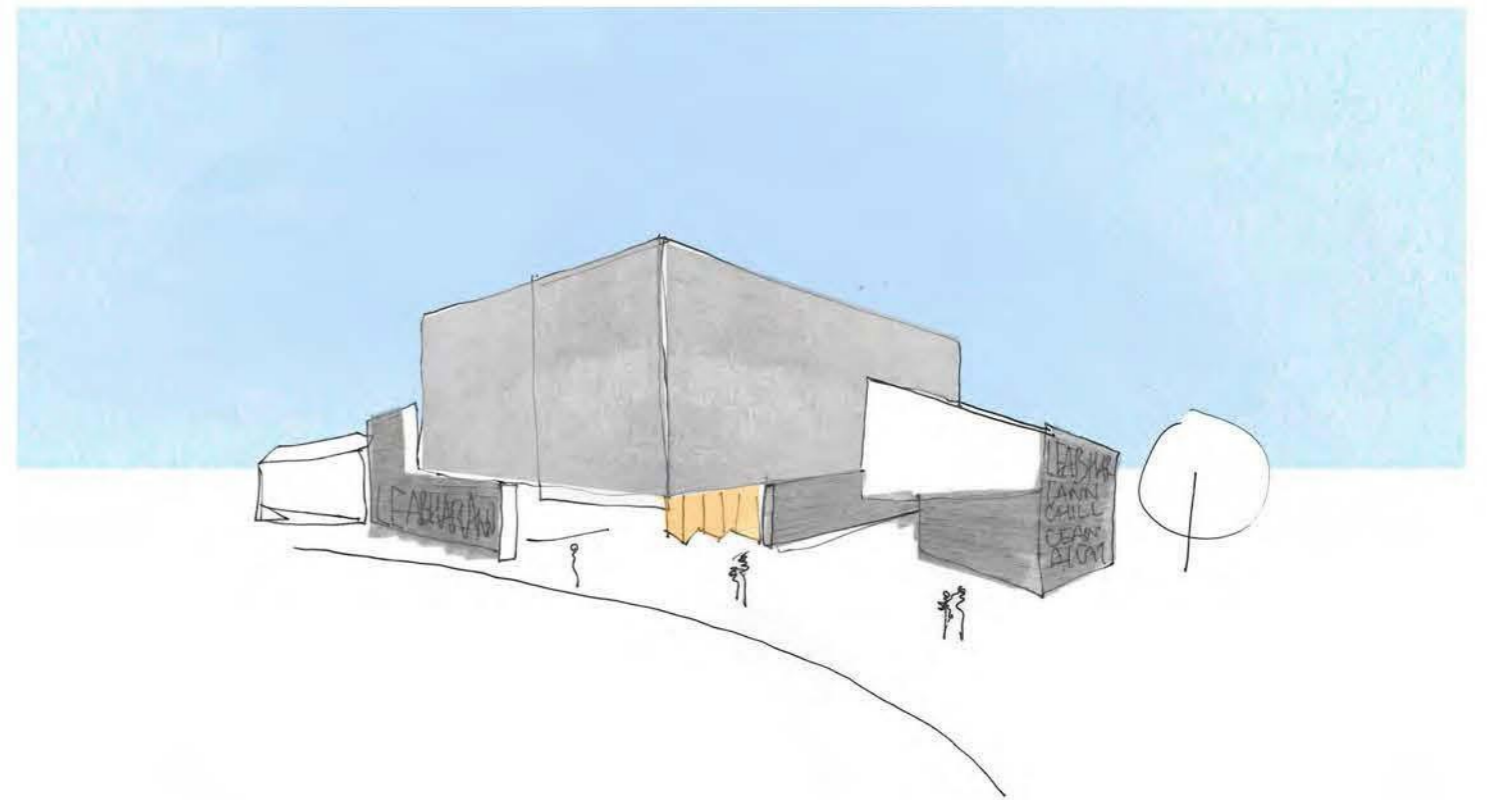
SET	EXT CROTTO					<b>VISITATION</b> PRODUCTION DESIGNER: LAUREN KELLY DRAWN BY: DIARMUID WOLFE DATE: 25/11/2022 APPROVED BY: DATE: 00.00.0000 ISSUED: DATE: 00.00.0000 DRAWING SCALE: 1:24 @ A3 REVISION:
DETAIL	CONCEPT					
DWG NO.	002-A-C	SET NO.	TBC	LOCATION	XXXXXX	



## LIBRARY KILKENNY

This project investigated the relationship between a centre of learning and the local community it serves. It was inspired by and intended to encourage the curious joy of learning.

The process applied in the realisation of this scheme is exemplar of my method and technique, investigating the spatial sequence through quick model making and sketching, instilling the ideas of the project in the physical form.

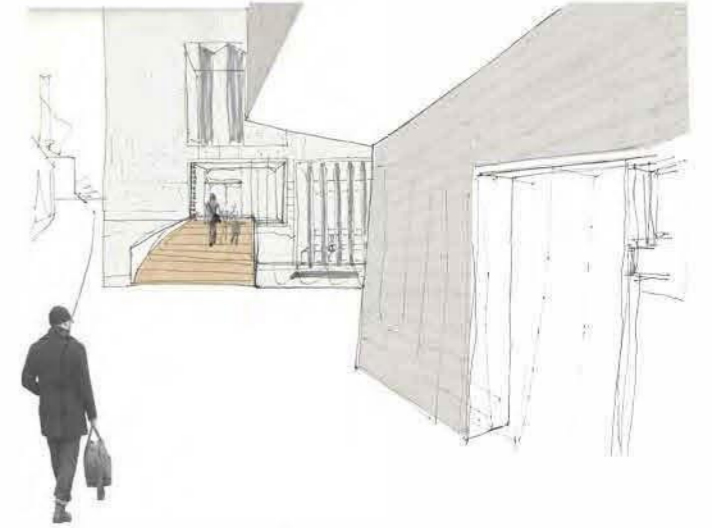




left; development of form and program through quick sketch models  
right; sketch model in context



sectional model expressing materiality and construction



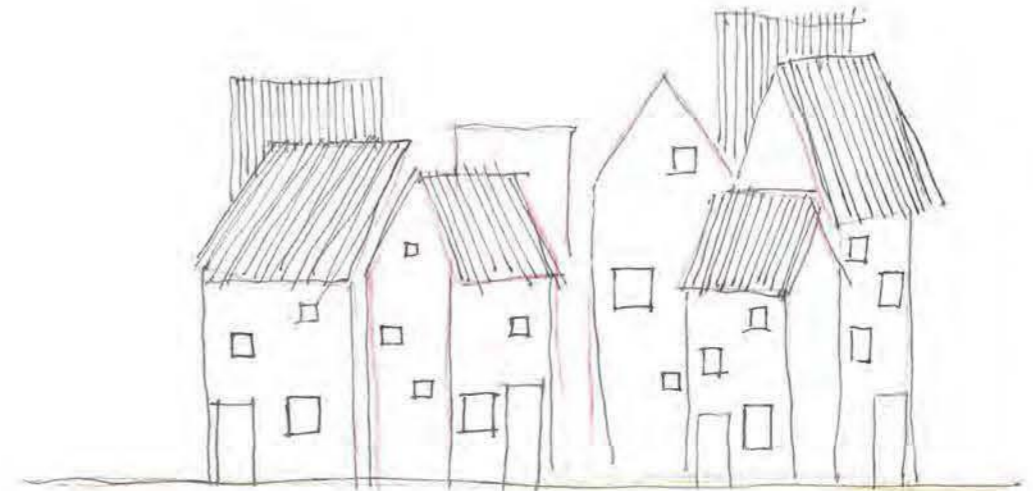
left; structural model  
right; series of sequential perspectives (hand drawn)

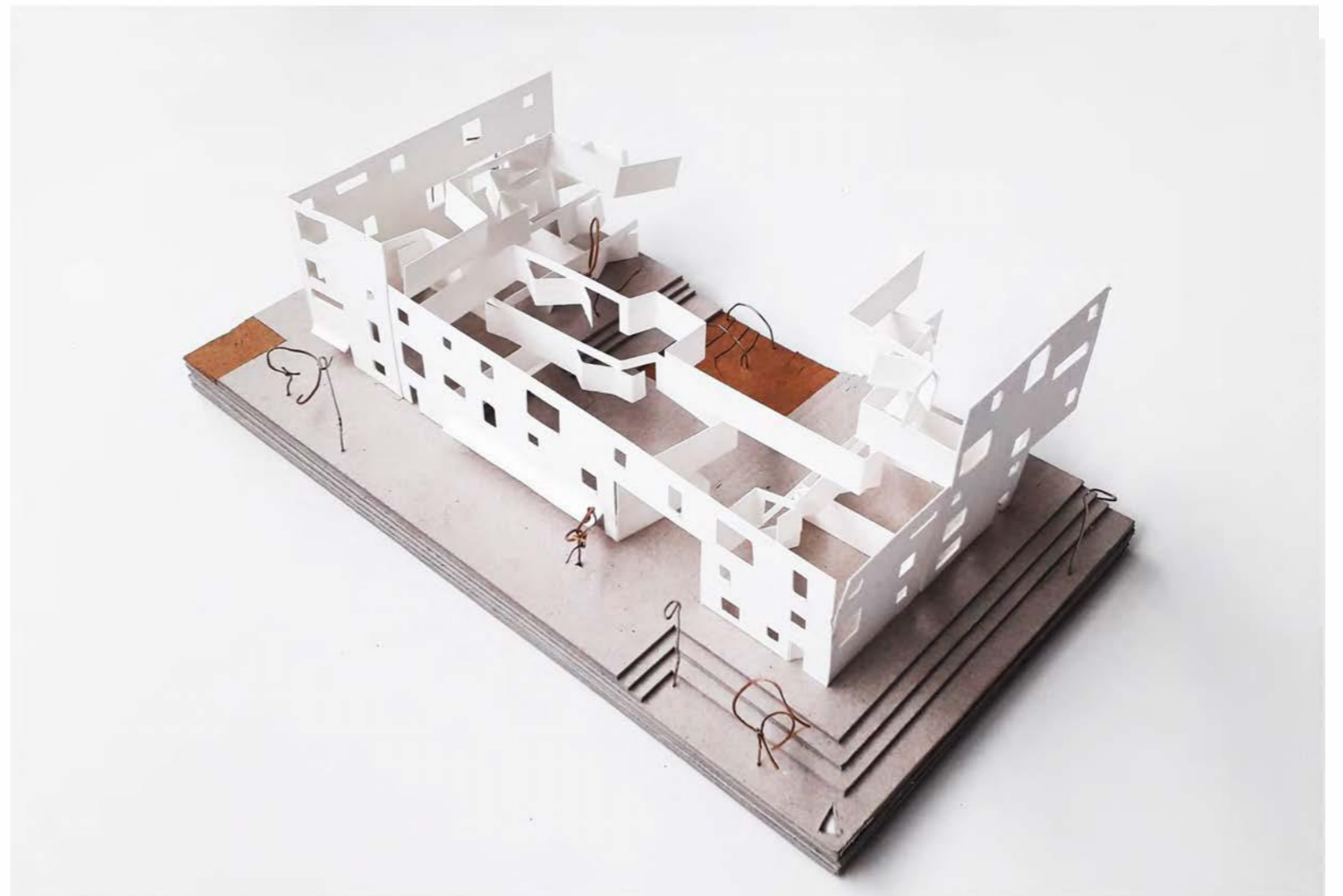
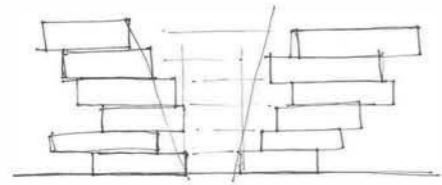
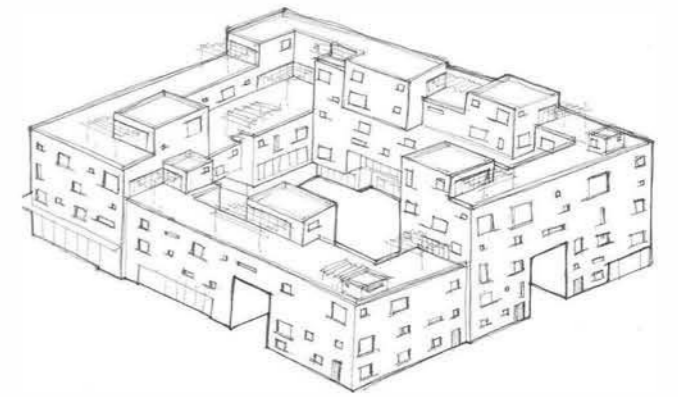
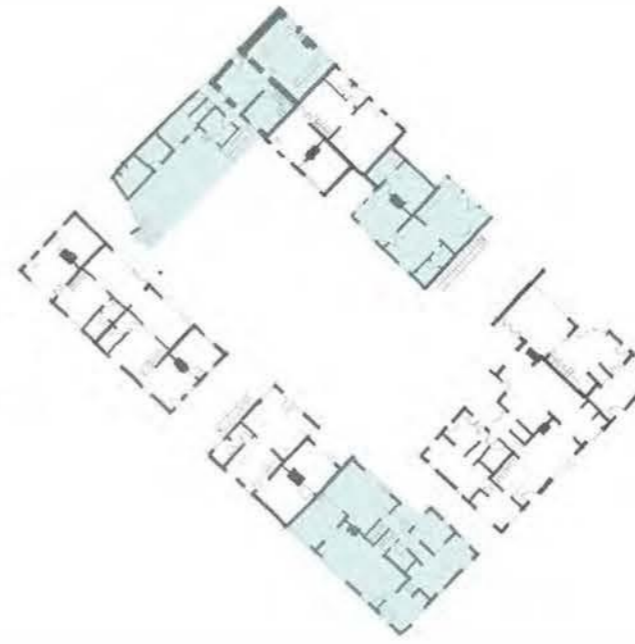
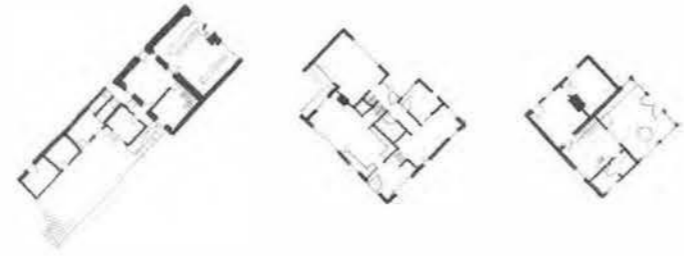
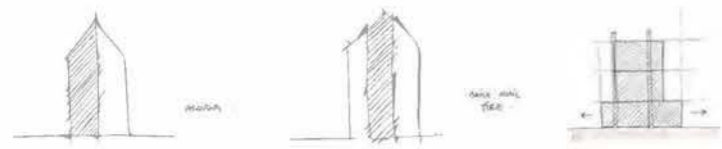
## URBAN VILLAGE DUBLIN DOCKLANDS

Asked to consider new forms of housing in Dublin City Centre I used this project to investigate the character of the Irish coastal village and apply it to the urban setting thereafter.

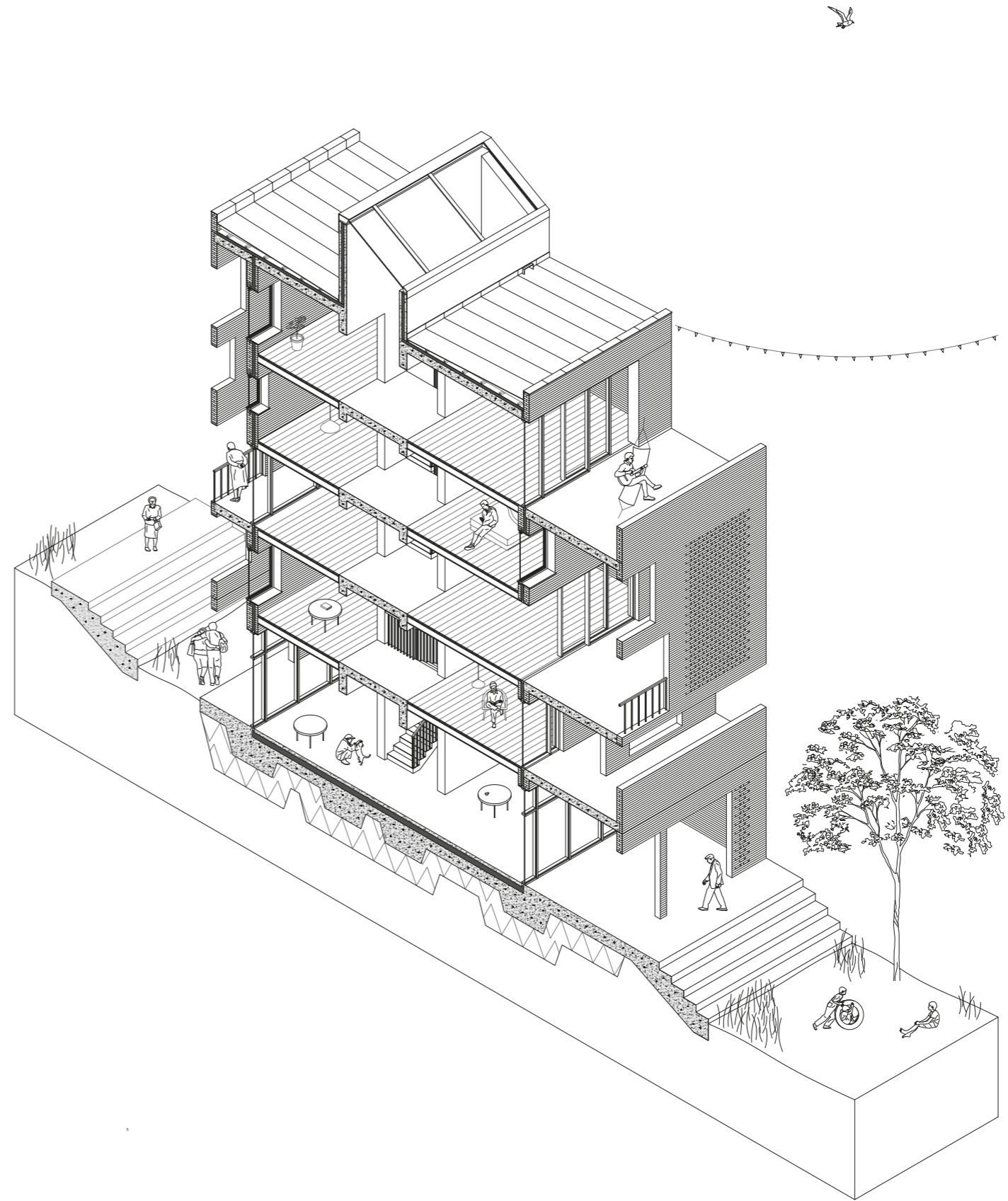
Based mostly on thoughts of active community and harmonious co-operative living the new village encourages diverse demographic co-existence.

Through model making, sketching, and perspectival drawing the scheme celebrates the warm domesticity of the Irish village, while championing the urban advantages of creating a social and sustainable infrastructure.





top; hand sketches and the formulation of a plan  
right; initial sketch model, spatializing programmatic decisions



top left; perspective (hand drawn)  
bottom left; sketch model expressing form and the interpretation of the georgian facade  
right; sectional axonometric of housing block



left; series of sketch models exploring the housing block  
right; model exploring environmental and contextual relationships; sea, land, civic and domestic buildings

## INTERNSHIP PARIS

I was given the opportunity to work with Shigeru Ban Architect's European base in Paris in the summer of 2019. I really enjoyed the challenge and expectation of contributing to such a prestigious practice's work.

During my time there I worked mostly in model making and sketching, the main purpose of my work being to communicate ideas between various members of the team. This communicative role meant I gained experience working on many international projects and the experience as a whole has made me a more ambitious, focused and adaptive worker.





left; model study for pavilion in Finland  
right; presentation model for art gallery extension in the south of France

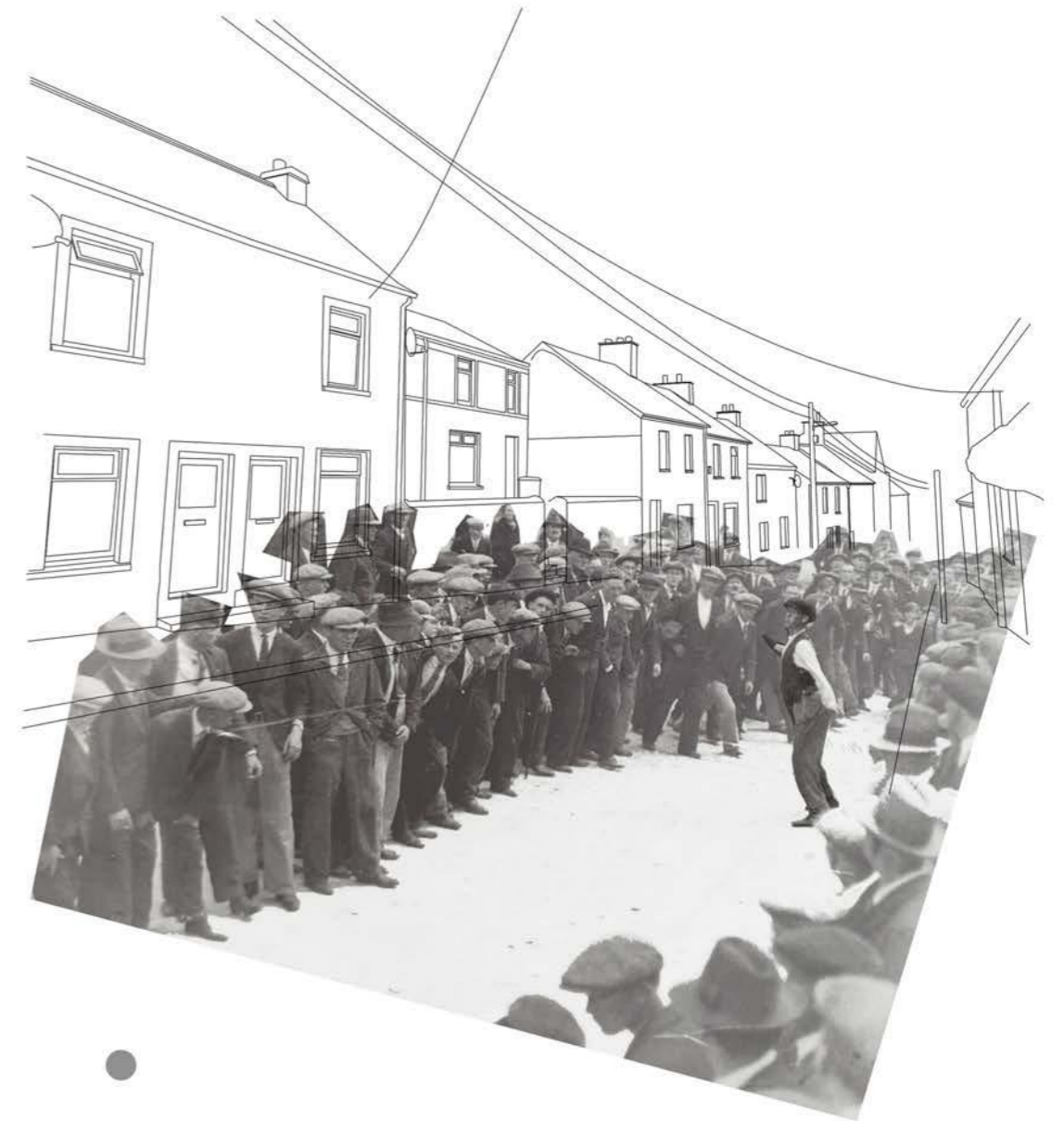
## THESIS PROJECT; PUBLIC HOUSE OF CORK

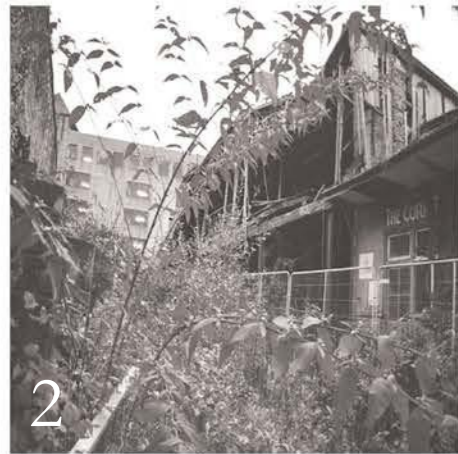
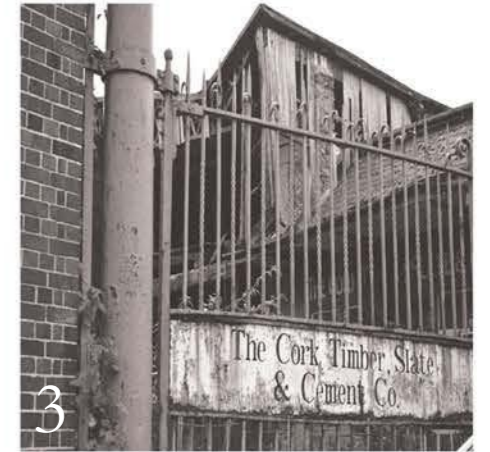
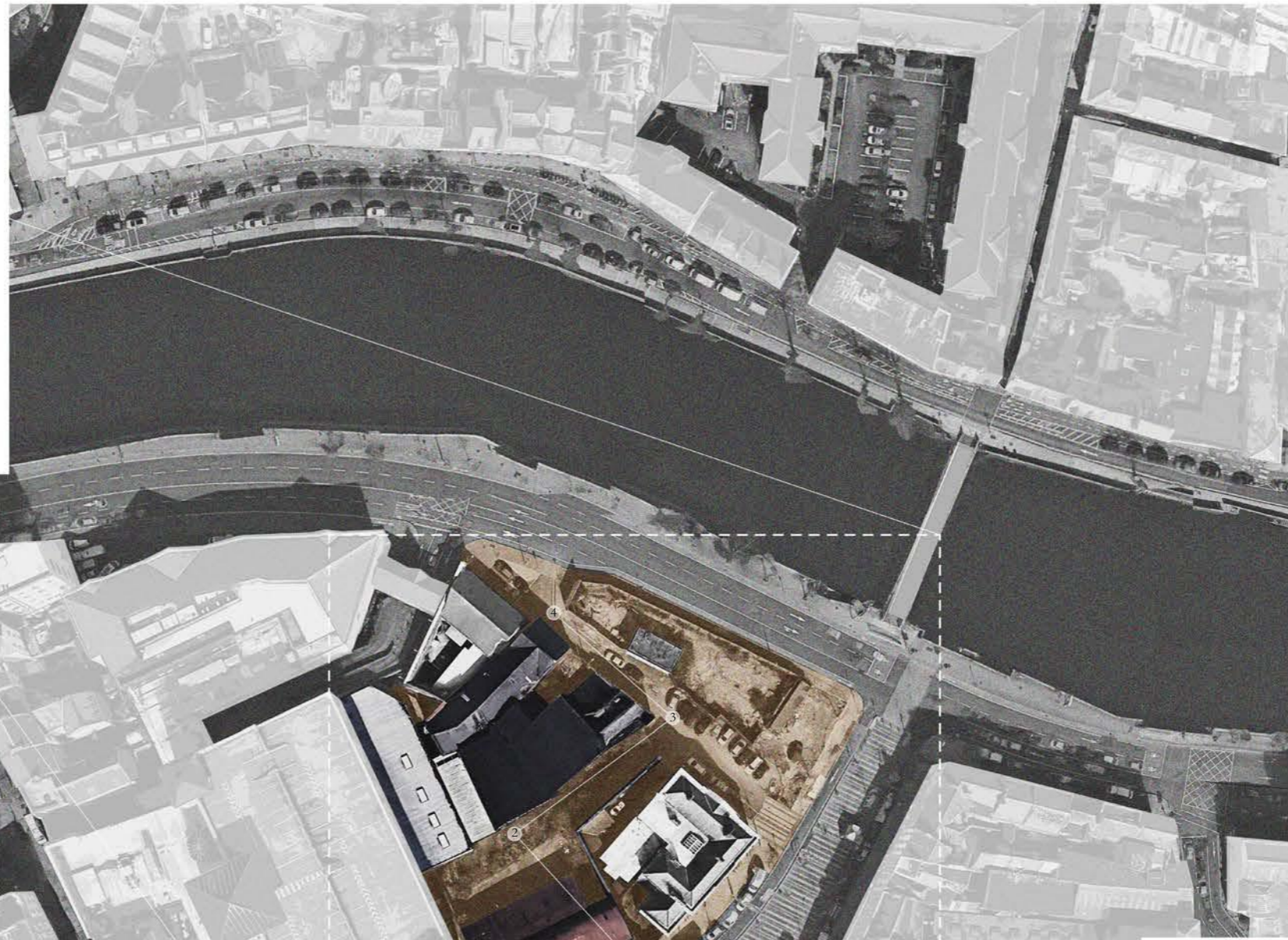
This project intends to nurture understanding and sensitivity in the architectural process in learning from locale; learning from shared story, shared song and the shared spaces and places these inhabit. It is learning from the interior spatiality of places that accommodate cultural expression.

It is the public house reimagined as a sitting room for the city, a shelter for the 'song of the city'; the unique cultural identity of its citizens, in this instance the unique cultural identity of Cork City.

In realising an architecture that spatializes these ideas the project intends to hijack existent social typologies to deliver a socially based sustainability. It is learning from 'béaloideas', the transmission of knowledge orally through the sharing of yarn, gossip and chat, it is learning from 'meitheal' in the communal effort and the promotion of collective responsibility over individualism, and it is learning from 'seanchas', the 'oeuvre' or shared imagination of the city that holds and celebrates ideas.

The architecture built from the lessons learned from locale is one of intimacy and gathering, one that encourages the sharing of identity and ideas by accommodating for the informal and colloquial transmission of knowledge through song, story, dance, tunes, poetry etc.



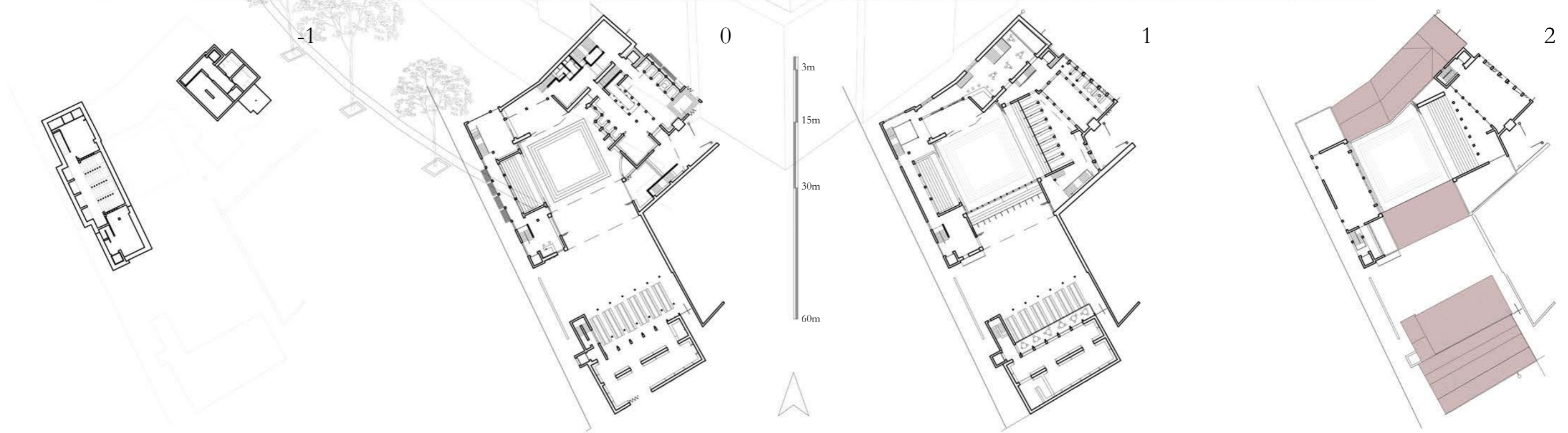
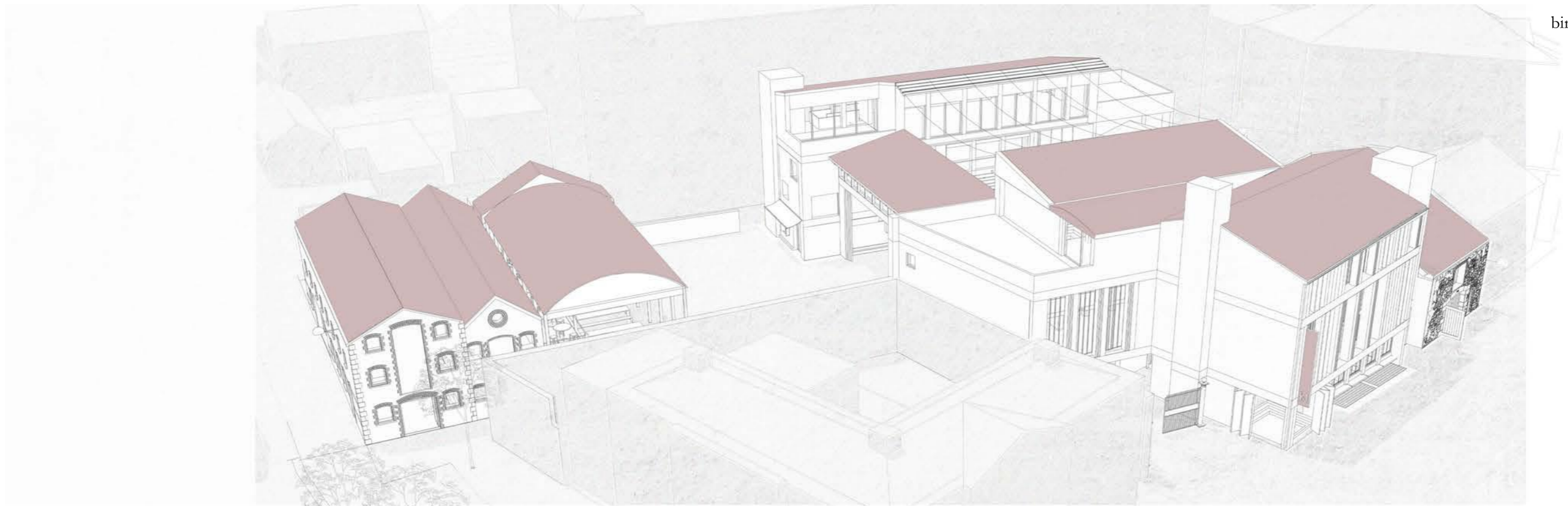


drawing studying urban grain and context



perspectival drawing showing approach from the river and kyril's quay

bird's eye looking south west



river elevation (north)

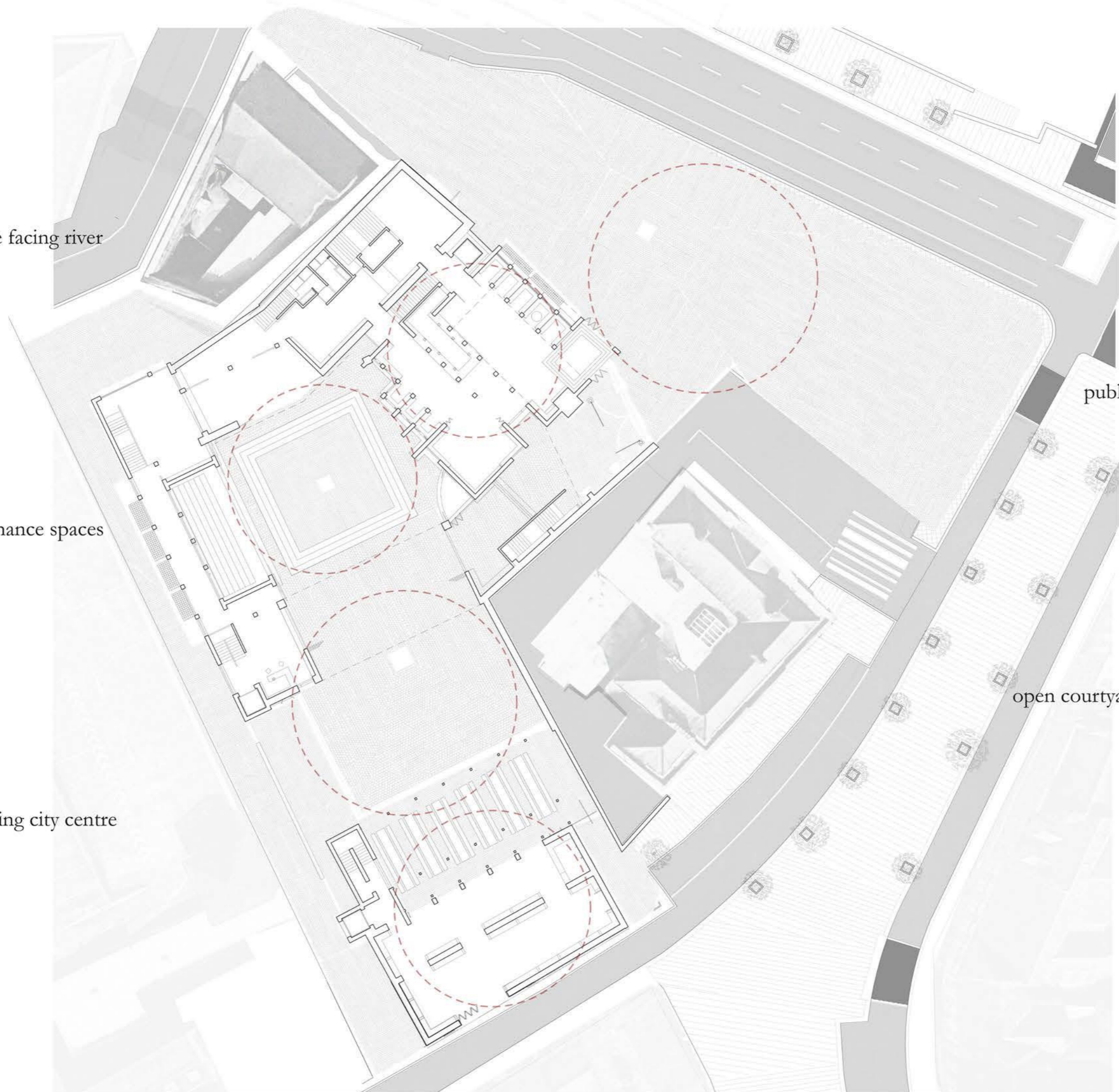
**pobal**  
new public space facing river

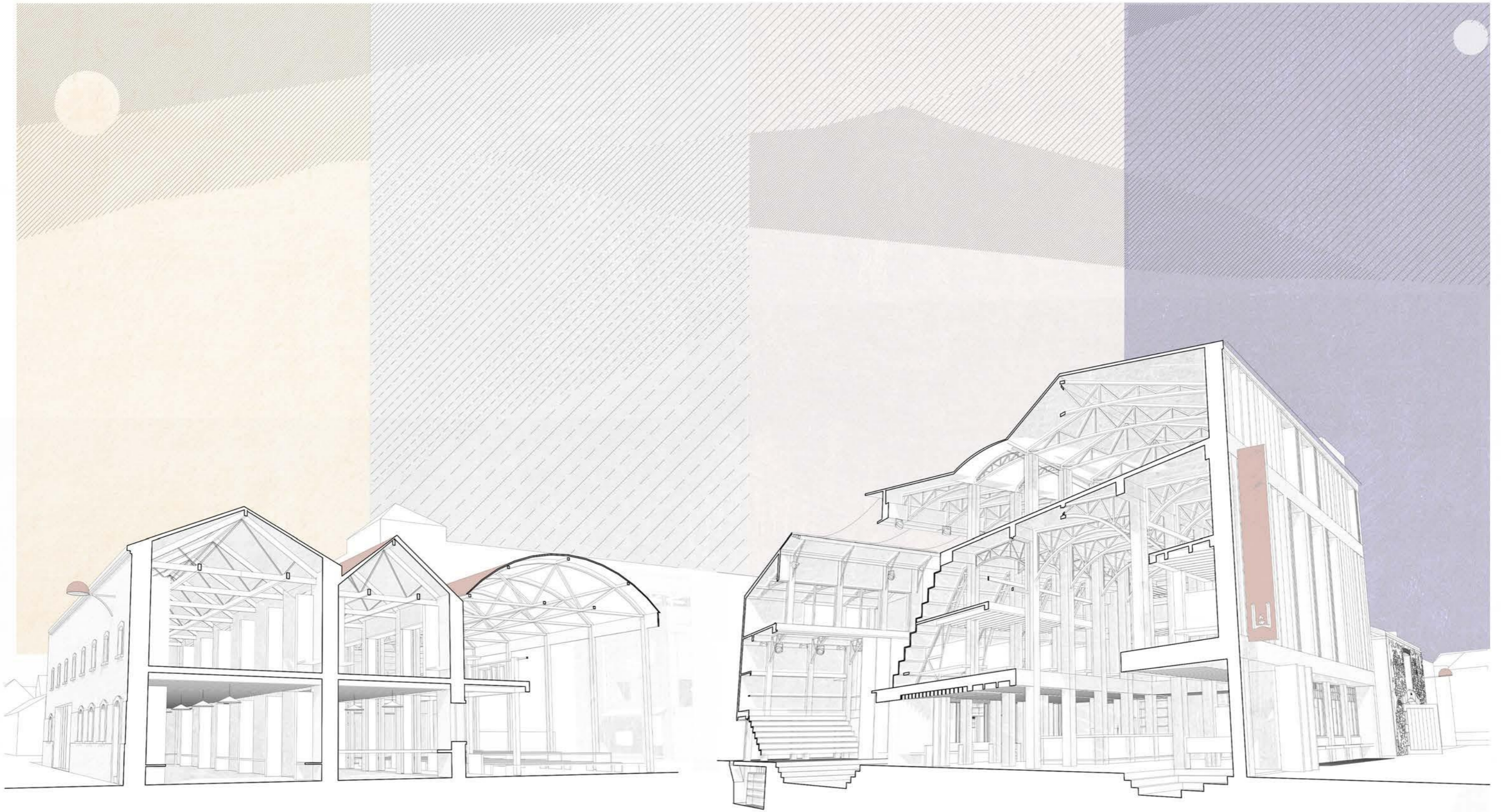
**stáitse**  
adaptive performance spaces

**cistin**  
open room facing city centre

**seomra suí**  
public house / bar and snugs

**gairdín**  
open courtyard / secret public square

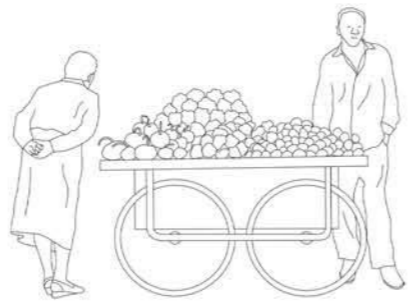




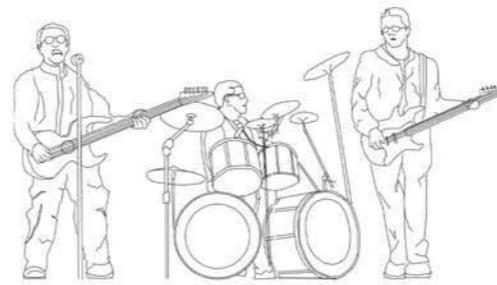
maidin



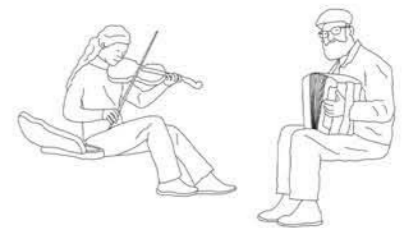
iarnóin



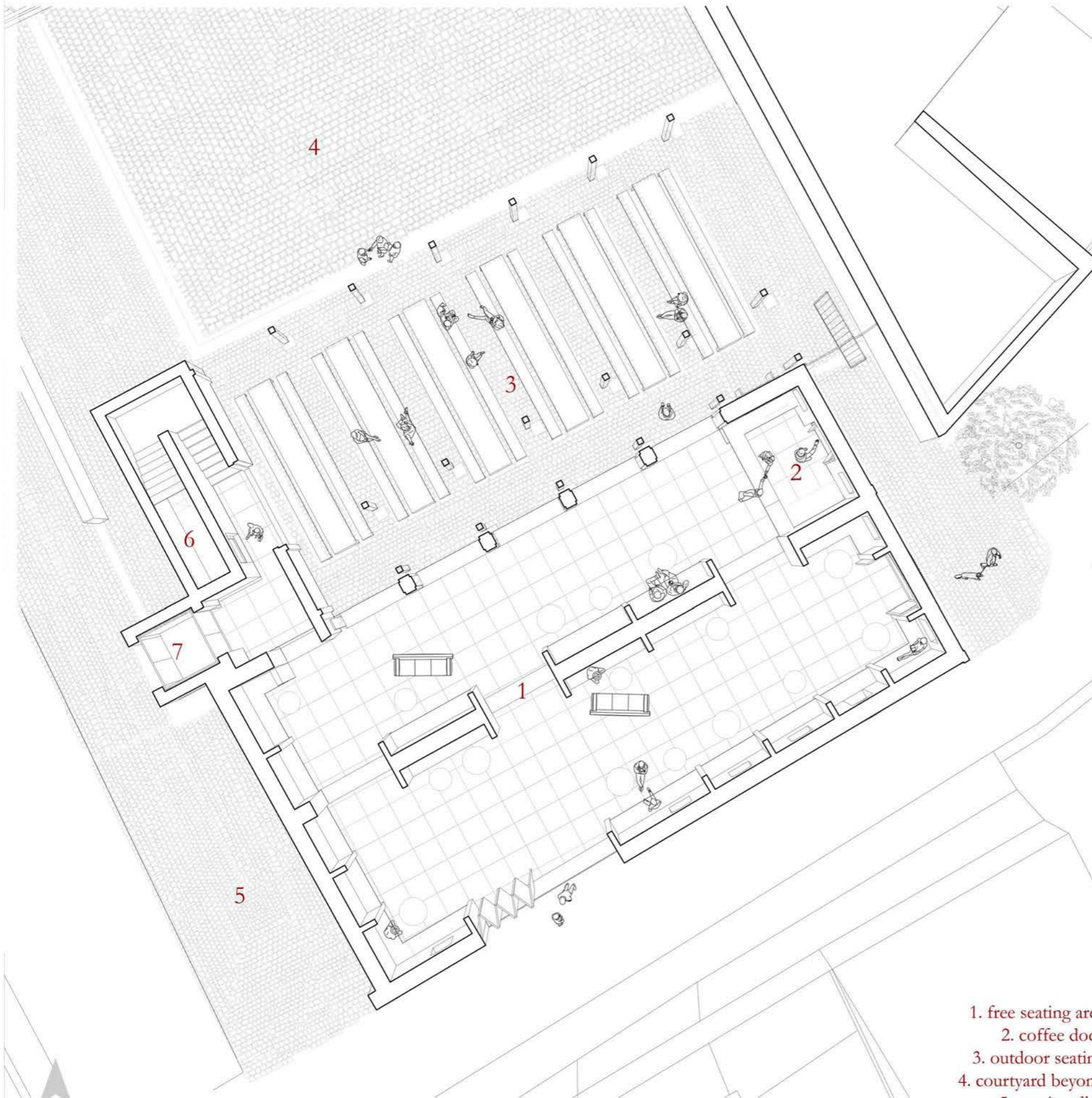
tráthnóna



istoíche



drawing suggesting varied use throughout a day / season

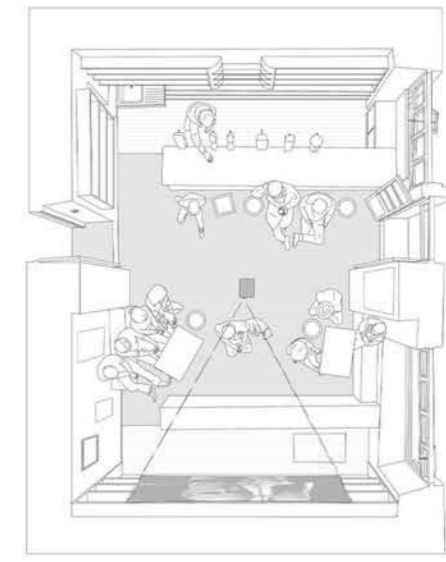
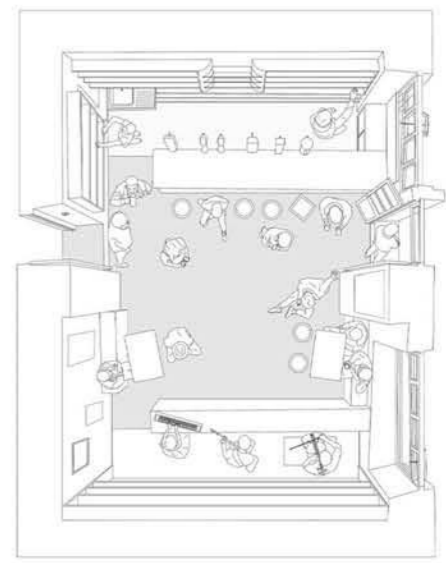


- 1. free seating area
- 2. coffee dock
- 3. outdoor seating
- 4. courtyard beyond
- 5. service alley
- 6. bathroom
- 7. lift

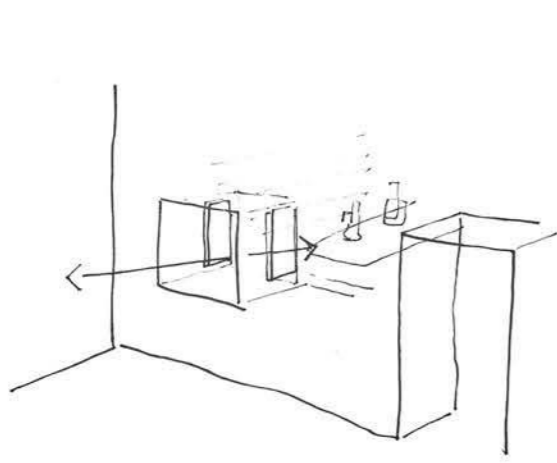
perspectival plan of 'cistin' a meeting place and interface with the city

learning from levis'

inhabited  
edge



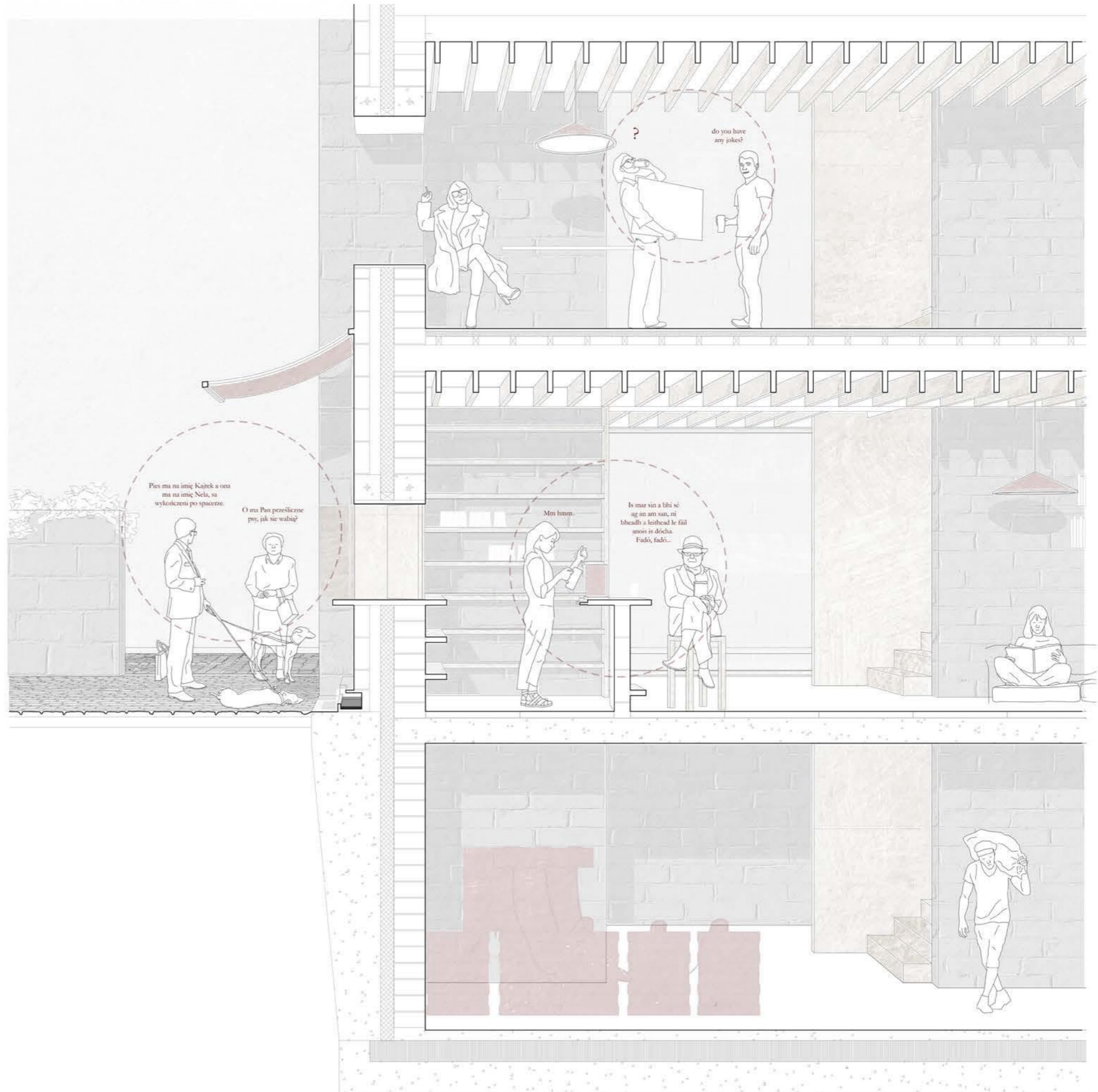
Learning From:  
 'The Hatch' in Levis' Cornerhouse, traditionally allowing workers from the forge to get served without entering the bar



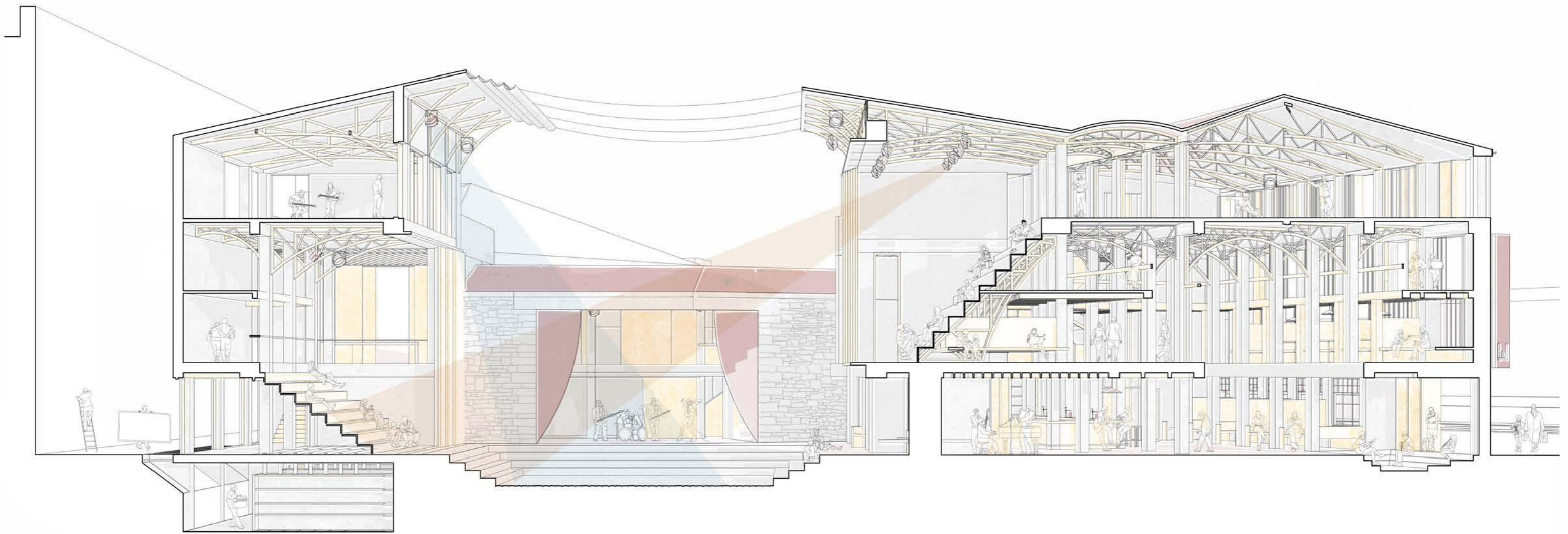
'Its all about meeting people,  
 that's what its about like,  
 meeting and contact and socialising like.  
 Its not about drink;  
 its conversations and its just  
 having a chat.  
 And three simple words; 'are you okay?'  
 And you know people need to hear that like,  
 its part of the pub business'

- RTÉ radio documentary on Levis' Cornerhouse

Learning From:  
 Cork sculptor Séamus Murphy's dog friendly stonework on Patrick's Street.



section showing construction and social context



section cut 'north-south' through scheme, facing west

THANK YOU GO RAIBH MAITH AGAT

I appreciate the time you have taken to look through this portfolio.